

Recombinant Human KRT13 Protein, GST-tagged

Cat. No. KRT13-4873H **Lot. No.** (See product label)

SPECIFICATION

Product Overview	Human KRT13 full-length ORF (AAH02661.3, 1 a.a. - 458 a.a.) recombinant protein with GST-tag at N-terminal.
Species	Human
Source	Wheat Germ
Description	<p>The protein encoded by this gene is a member of the keratin gene family. The keratins are intermediate filament proteins responsible for the structural integrity of epithelial cells and are subdivided into cytokeratins and hair keratins. Most of the type I cytokeratins consist of acidic proteins which are arranged in pairs of heterotypic keratin chains. This type I cytokeratin is paired with keratin 4 and expressed in the suprabasal layers of non-cornified stratified epithelia. Mutations in this gene and keratin 4 have been associated with the autosomal dominant disorder White Sponge Nevus. The type I cytokeratins are clustered in a region of chromosome 17q21.2. Alternative splicing of this gene results in multiple transcript variants; however, not all variants have been described. [provided by RefSeq]</p>
Molecular Mass	76 kDa
AA Sequence	<pre>MSLRLQSSSASYGGGFGGGSCQLGGGRGVSTCSTRFVSGGSAGGYGGGVSCGF GGGAGSGFGGGYGGGLGGGYGGGLGGGFGGGFAGGFVDFGACDGGLLTGNEKI TMQNLNDRLASYLEKVRAL E E ANADLEVKIRDWHLKQSPASPERDYSPYYKTIEELR DKILTATIENNRVILEIDNARLAVDDFRLKYENELALRQSVEADINGLRRVLDDELTSKT</pre>

 Tel: 1-631-559-9269 1-516-512-3133

 Email: info@creative-biomart.com  Fax: 1-631-938-8127

 45-1 Ramsey Road, Shirley, NY 11967, USA

DLEMQIESLNEELAYMKKNHEEEMKEFSNQVVGQVNVEMDATPGIDLTRVLAEMRE
 QYEAMAERNRRDAEEWFHAKSAELNKEVSTNTAMIQTSKTEITELRRTLQGLEIELQ
 SQLSMKAGLENTVAETECRYALQLQQIQGLISSIEAQLSELRSEMECQNQEYKMLLDI
 KTRLEQEIATYRSLLLEGQDAKMIGFPSSAGSVSPRSTSVTTTSSASVTTTSSNASGRR
 TSDVRRP

Applications
 Enzyme-linked Immunoabsorbent Assay
 Western Blot (Recombinant protein)
 Antibody Production
 Protein Array

Notes
 Best use within three months from the date of receipt of this protein.

Storage
 Store at -80 centigrade. Aliquot to avoid repeated freezing and thawing.

Storage Buffer
 50 mM Tris-HCl, 10 mM reduced Glutathione, pH=8.0 in the elution buffer.

GENE INFORMATION

Gene Name
 KRT13 keratin 13 [[Homo sapiens](#)]

Official Symbol
 KRT13

Synonyms
 KRT13; keratin 13; keratin, type I cytoskeletal 13; CK13; cytokeratin 13; K13; keratin;
 type I cytoskeletal 13; MGC3781; MGC161462; CK-13; keratin-13; cytokeratin-13;

Gene ID
 3860

mRNA Refseq
 NM_002274

Protein Refseq
 NP_002265

 Tel: 1-631-559-9269 1-516-512-3133

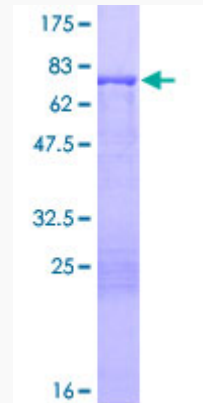
 Email: info@creative-biomart.com  Fax: 1-631-938-8127

 45-1 Ramsey Road, Shirley, NY 11967, USA

MIM 148065

UniProt ID P13646

**Quality Control
Testing**



12.5% SDS-PAGE Stained with Coomassie Blue

 Tel: 1-631-559-9269 1-516-512-3133

 Email: info@creative-biomart.com  Fax: 1-631-938-8127

 45-1 Ramsey Road, Shirley, NY 11967, USA