

Recombinant Human KRT13 protein(1-458aa), His&Myc-tagged

Cat. No. KRT13-9136H Lot. No. (See product label)

SPECIFICATION

Product Overview	Recombinant Human KRT13 protein(P13646)(1-458aa), fused with N-terminal His tag and C-terminal Myc tag, was expressed in E.coli.
Species	Human
Source	E.coli
ProteinLength	1-458aa
Form	If the delivery form is liquid, the default storage buffer is Tris/PBS-based buffer, 5%-50% glycerol. If the delivery form is lyophilized powder, the buffer before lyophilization is Tris/PBS-based buffer, 6% Trehalose, pH 8.0.
Molecular Mass	57.0 kDa
Purity	Greater than 90% as determined by SDS-PAGE.
Storage	Store at -20°C/-80°C upon receipt, aliquoting is necessary for mutiple use. Avoid repeated freeze-thaw cycles.
Reconstitution	We recommend that this vial be briefly centrifuged prior to opening to bring the contents to the bottom. Please reconstitute protein in deionized sterile water to a concentration of 0.1-1.0 mg/mL. We recommend to add 5-50% of glycerol (final concentration) and aliquot for long-term storage at -20°C/-80°C.

 Tel: 1-631-559-9269 1-516-512-3133

 Email: info@creative-biomart.com  Fax: 1-631-938-8127

 45-1 Ramsey Road, Shirley, NY 11967, USA

AA Sequence

MSLRLQSSSASYGGGFGGGSCQLGGGRGVSTCSTRFVSGGSAGGYGGGVSCGF
 GGGAGSGFGGGYGGGLGGGYGGGLGGGFAGGFVDFGACDGGLLTGNEKI
 TMQNLNDRLASYLEKVRALEEANADLEVKIRDWHLKQSPASPERDYSPPYKTIEELR
 DKILTATIENNRVILEIDNARLAADDLFRKYEENELALRQSVEADINGLRRVDELTLST
 DLEMQIESLNEELAYMKKNHEEEMKEFSNQVVGQVNVEMDATPGIDLTRVLAEMRE
 QYEAMAERNRRDAEEWFHTKSAELNKEVSTNTAMIQTSKTEITELRRTLQGLEIELQ
 SQLSMKAGLENTVAETECRYALQLQQIQGLISSIEAQLSELRSEMECQNQEYKMLLDI
 KTRLEQEIATYRSLLLEGQDAKMIGFPSSAGSVSPRSTSVTTTSSASVTTTSSNASGRR
 TSDVRRP

GENE INFORMATION

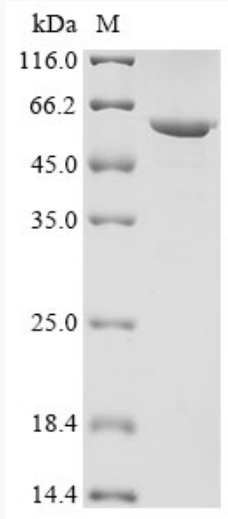
Gene Name	KRT13 keratin 13 [Homo sapiens]
Official Symbol	KRT13
Synonyms	KRT13; keratin 13; keratin, type I cytoskeletal 13; CK13; cytokeratin 13; K13; keratin; type I cytoskeletal 13; MGC3781; MGC161462; CK-13; keratin-13; cytokeratin-13;
Gene ID	3860
mRNA Refseq	NM_002274
Protein Refseq	NP_002265
MIM	148065
UniProt ID	P13646

 Tel: 1-631-559-9269 1-516-512-3133

 Email: info@creative-biomart.com  Fax: 1-631-938-8127

 45-1 Ramsey Road, Shirley, NY 11967, USA

SDS-PAGE



 Tel: 1-631-559-9269 1-516-512-3133

 Email: info@creative-biomart.com  Fax: 1-631-938-8127

 45-1 Ramsey Road, Shirley, NY 11967, USA