

Recombinant Human KRT14 Protein (1-472 aa), His-tagged

Cat. No. KRT14-1437H Lot. No. (See product label)

SPECIFICATION

Product Overview	Recombinant Human KRT14 Protein (1-472 aa) is produced by Yeast expression system. This protein is fused with a 6xHis tag at the N-terminal. Research Area: Signal Transduction. Protein Description: Full Length.
Species	Human
Source	Yeast
ProteinLength	1-472 aa
Description	The nonhelical tail domain is involved in promoting KRT5-KRT14 filaments to self-organize into large bundles and enhances the mechanical properties involved in resilience of keratin intermediate filaments in vitro.
Form	Tris-based buffer,50% glycerol
Molecular Mass	53.6 kDa
AA Sequence	MTTC SRQFTSSSSMKGSCGIGGGIGGGSSRISSVLAGGSCRAPSTYGGGLSVSSSR FSSGGACGLGGGYGGGFSSSSSSFGSGFGGGYGGGLGAGLGGGFGGGFAGGDG LLVGSEKVTMQNLNDR LASYLDKVRALEEANADLEV KIRDWYQRQRPAEIKDYSPYF KTIEDLRNKILTATVDNANVLLQIDNARLAADDFRTKYETELNLRMSVEADINGLRRVL DELTARADLEMQIESLKEELAYLKKNH EEMNALRGQVGGDVNVEMDAAPGV DLS RILNEMRDQYEKMAEKNRKDAEEWFFTKTEELNREVATNSELVQSGKSEISELRRT MQNLEIELQSQLSMKASLENSLEETKGRYCMQLAQIQEMIGSVEEQLAQLRCEMEQ

 Tel: 1-631-559-9269 1-516-512-3133

 Email: info@creative-biomart.com  Fax: 1-631-938-8127

 45-1 Ramsey Road, Shirley, NY 11967, USA

QNQEYKILLDVKTRLEQEIATYRRLLLEGEDAHLSSSQFSSGSQSSRDVTSSSRQIRT
KVMDVHDGKVVSTHEQVLRTKN

Purity > 90% as determined by SDS-PAGE.

Notes Repeated freezing and thawing is not recommended. Store working aliquots at 4 centigrade for up to one week.

Storage The shelf life is related to many factors, storage state, buffer ingredients, storage temperature and the stability of the protein itself. Generally, the shelf life of liquid form is 6 months at -20 centigrade/-80 centigrade. The shelf life of lyophilized form is 12 months at -20 centigrade/-80 centigrade.

Concentration A hardcopy of COA with reconstitution instruction is sent along with the products.

GENE INFORMATION

Gene Name [KRT14 keratin 14 \[Homo sapiens \]](#)

Official Symbol [KRT14](#)

Synonyms KRT14; Koebner; CK-14; keratin-14; cytokeratin 14; K14; NFJ; CK14; EBS3; EBS4;

Gene ID [3861](#)

mRNA Refseq [NM_000526](#)

Protein Refseq [NP_000517](#)

MIM [148066](#)

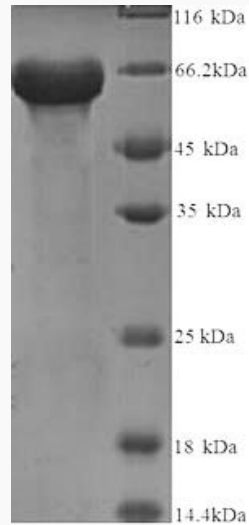
 Tel: 1-631-559-9269 1-516-512-3133

 Email: info@creative-biomart.com  Fax: 1-631-938-8127

 45-1 Ramsey Road, Shirley, NY 11967, USA

UniProt ID

P02533



(Tris-Glycine gel) Discontinuous SDS-PAGE (reduced) with 5% enrichment gel and 15% separation gel.

 Tel: 1-631-559-9269 1-516-512-3133

 Email: info@creative-biomart.com  Fax: 1-631-938-8127

 45-1 Ramsey Road, Shirley, NY 11967, USA