

Recombinant Human KRT14 Protein (Leu111-Leu418), N-His tagged

Cat. No. KRT14-4389H Lot. No. (See product label)

SPECIFICATION

Product Overview	Recombinant human KRT14 (Leu111-Leu418) fused with the N-His tag was expressed in E. coli.
Species	Human
Source	E.coli
ProteinLength	Leu111-Leu418
Form	Lyophilized powder/frozen liquid
Molecular Mass	38.18 kDa
Purity	>90% as determined by SDS-PAGE.
Notes	For research use only.
Storage	Use a manual defrost freezer and avoid repeated freeze thaw cycles. Store at 2 to 8 centigrade for one week. Store at -20 to -80 centigrade for twelve months from the date of receipt.
Storage Buffer	0.01M PBS, pH 7.4, 0.02% NLS
Reconstitution	Reconstitute in sterile water for a stock solution.

 Tel: 1-631-559-9269 1-516-512-3133

 Email: info@creative-biomart.com  Fax: 1-631-938-8127

 45-1 Ramsey Road, Shirley, NY 11967, USA

Shipping They are shipped out with dry ice/blue ice unless customers require otherwise.

GENE INFORMATION

Gene Name KRT14 keratin 14 [Homo sapiens (human)]

Official Symbol KRT14

Synonyms KRT14; keratin 14; EBS3, EBS4, keratin 14 (epidermolysis bullosa simplex, Dowling Meara, Koebner); keratin, type I cytoskeletal 14; epidermolysis bullosa simplex; Dowling Meara; Koebner; CK-14; keratin-14; cytokeratin 14; cytokeratin-14; keratin 14 (epidermolysis bullosa simplex, Dowling-Meara, Koebner); K14; NFJ; CK14; EBS3; EBS4;

Gene ID 3861

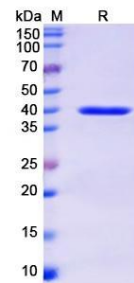
mRNA Refseq NM_000526

Protein Refseq NP_000517

MIM 148066

UniProt ID P02533

SDS-PAGE



 Tel: 1-631-559-9269 1-516-512-3133

 Email: info@creative-biomart.com  Fax: 1-631-938-8127

 45-1 Ramsey Road, Shirley, NY 11967, USA