

Recombinant Human KRT15 Protein, GST-tagged

Cat. No. KRT15-4871H Lot. No. (See product label)

SPECIFICATION

Product Overview	Human KRT15 full-length ORF (AAH02641.1, 1 a.a. - 456 a.a.) recombinant protein with GST tag at N-terminal.
Species	Human
Source	Wheat Germ
Description	The protein encoded by this gene is a member of the keratin gene family. The keratins are intermediate filament proteins responsible for the structural integrity of epithelial cells and are subdivided into cytokeratins and hair keratins. Most of the type I cytokeratins consist of acidic proteins which are arranged in pairs of heterotypic keratin chains and are clustered in a region on chromosome 17q21.2. [provided by RefSeq]
Molecular Mass	75.9 kDa
AA Sequence	<p>MTTFLQTSSSTFGGGSTRGGSLLAGGGGFGGGSLSGGGGSRISASSARFVSSG SGGGYGGGMRVCGFGGGAGSVFGGGFGGGVGGGFGGGFGGGDGGLLSGNEKIT MQNLNDRLASYLKVRAL E E A N A D L E V K I H D W Y Q K Q T P T S P E C D Y S Q Y F K T I E E L R D K I M A T T I D N S R V I L E I D N A R L A A D D F R L K Y E N E L A L R Q G V E A D I N G L R R V L D E L T L A R T D L E M Q I E G L N E E L A Y L K K N H E E E M K E F S S Q L A G Q V N V E M D A A P G V D L T R V L A E M R E Q Y E A M A E K N R R D V E A W F F S K T E E L N K E V A S N T E M I Q T S K T E I T D L R R T M Q E L E I E L Q S Q L S M K A G L E N S L A E T E C R Y A T Q L Q Q I Q G L I G G L E A Q L S E L R C E M E A Q N Q E Y K M L L D I K T R L E Q E I A T Y R S L L E G Q D A K M A G I G I R E A S S G G G G S S S N F H I N V E E S V D G Q V V S</p>

 Tel: 1-631-559-9269 1-516-512-3133

 Email: info@creative-biomart.com  Fax: 1-631-938-8127

 45-1 Ramsey Road, Shirley, NY 11967, USA

	SHKREI
Applications	Enzyme-linked Immunoabsorbent Assay Western Blot (Recombinant protein) Antibody Production Protein Array
Notes	Best use within three months from the date of receipt of this protein.
Storage	Store at -80 centigrade. Aliquot to avoid repeated freezing and thawing.
Storage Buffer	50 mM Tris-HCl, 10 mM reduced Glutathione, pH=8.0 in the elution buffer.
GENE INFORMATION	
Gene Name	KRT15 keratin 15 [Homo sapiens]
Official Symbol	KRT15
Synonyms	KRT15; keratin 15; keratin, type I cytoskeletal 15; CK15; cytokeratin 15; K1CO; K15; basic; beta; type I cytoskeletal 15; CK-15; cytokeratin-15; keratin-15, beta; keratin-15, basic;
Gene ID	3866
mRNA Refseq	NM_002275
Protein Refseq	NP_002266
MIM	148030

 Tel: 1-631-559-9269 1-516-512-3133

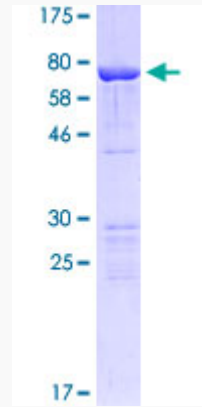
 Email: info@creative-biomart.com  Fax: 1-631-938-8127

 45-1 Ramsey Road, Shirley, NY 11967, USA

UniProt ID

P19012

Quality Control
Testing



12.5% SDS-PAGE Stained with Coomassie Blue

 Tel: 1-631-559-9269 1-516-512-3133

 Email: info@creative-biomart.com  Fax: 1-631-938-8127

 45-1 Ramsey Road, Shirley, NY 11967, USA