

Recombinant Human KRT17 Protein (Ile252-Ala393), N-His tagged

Cat. No. KRT17-4392H Lot. No. (See product label)

SPECIFICATION

Product Overview	Recombinant human KRT17 (Ile252-Ala393) fused with the N-His tag was expressed in E. coli.
Species	Human
Source	E.coli
ProteinLength	Ile252-Ala393
Form	Lyophilized powder/frozen liquid
Molecular Mass	18.90 kDa
Purity	>90% as determined by SDS-PAGE.
Notes	For research use only.
Storage	Use a manual defrost freezer and avoid repeated freeze thaw cycles. Store at 2 to 8 centigrade for one week. Store at -20 to -80 centigrade for twelve months from the date of receipt.
Storage Buffer	0.01M PBS, pH 7.4, 0.02% NLS
Reconstitution	Reconstitute in sterile water for a stock solution.

 Tel: 1-631-559-9269 1-516-512-3133

 Email: info@creative-biomart.com  Fax: 1-631-938-8127

 45-1 Ramsey Road, Shirley, NY 11967, USA

Shipping

They are shipped out with dry ice/blue ice unless customers require otherwise.

GENE INFORMATION
Gene Name

KRT17 keratin 17 [Homo sapiens (human)]

Official Symbol

KRT17

Synonyms

KRT17; keratin 17; PCHC1; keratin, type I cytoskeletal 17; 39.1; CK-17; keratin-17; cytokeratin-17; keratin 17 epitope S1; keratin 17 epitope S2; keratin 17 epitope S4; PC; K17; PC2;

Gene ID

3872

mRNA Refseq

NM_000422

Protein Refseq

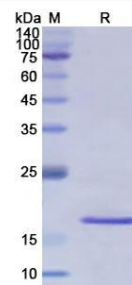
NP_000413

MIM

148069

UniProt ID

Q04695

SDS-PAGE


Tel: 1-631-559-9269 1-516-512-3133

Email: info@creative-biomart.com Fax: 1-631-938-8127

45-1 Ramsey Road, Shirley, NY 11967, USA