

# Recombinant Bovine KRT17 Protein (1-441 aa), His-SUMO-tagged

**Cat. No.** KRT17-611B    **Lot. No.** (See product label)

## SPECIFICATION

**Product Overview**      Recombinant Bovine KRT17 Protein (1-441 aa) is produced by E. coli expression system. This protein is fused with a 6xHis-SUMO tag at the N-terminal. Research Area: Signal Transduction. Protein Description: Full Length.

**Species**      Bovine


**Source**      E.coli

**ProteinLength**      1-441 aa

**Description**      Type I keratin involved in the formation and maintenance of various skin appendages, specifically in determining shape and orientation of hair. Required for the correct growth of hair follicles, in particular for the persistence of the anagen (growth) state. Modulates the function of TNF-alpha in the specific context of hair cycling. Regulates protein synthesis and epithelial cell growth through binding to the adapter protein SFN and by stimulating Akt/mTOR pathway. Involved in tissue repair. May be a marker of basal cell differentiation in complex epithelia and therefore indicative of a certain type of epithelial "st cells". Acts as a promoter of epithelial proliferation by acting a regulator of immune response in skin: promotes Th1/Th17-dominated immune environment contributing to the development of basaloid skin tumors. May act as an autoantigen in the immunopathogenesis of psoriasis, with certain peptide regions being a major target for autoreactive T-cells and hence causing their proliferation.

 Tel: 1-631-559-9269    1-516-512-3133

 Email: [info@creative-biomart.com](mailto:info@creative-biomart.com)     Fax: 1-631-938-8127

 45-1 Ramsey Road, Shirley, NY 11967, USA

<b>Form</b>	Tris-based buffer, 50% glycerol
<b>Molecular Mass</b>	64.7 kDa
<b>AA Sequence</b>	<p>MTTTIRHFSSGSIKSSGLAGGSSRSCRVSGSLGGGSCRLGSAGGLGSGLGGSSY  SSCYSGSGGGYGSGGYVSGGYGGGFGGVDGLLVGGEKATMQNLNDRLASYLK  VRALEEANTELELKIRDWYQKQAPGPAPDYSSYFKTIEDLRNKIHTATVDNANLLLQI  DNARLAADDFRTKFETEALRVSVEADINGLRRVLDELTLARADLEMQIENLKEELAY  LRKNHEEEMKALRGQVGGEINVEMDAAPGVDLRILNEMRDQYEKMAEKNRKADE  DWFFSKTEELNREVATNSELVQSGKSEISELRRTLQALEIELQSQLSMKASLEGSLA  ETENRYCMQLSQIQGLIGSVEEQLAQLRCEMEQQNQEYKILLDVKTRLEQEIATYRR  LLEGEDAHLTQYKTKEPVTTTRQVRTIVEEVQDGRVISSREQVHQTSH</p>
<b>Purity</b>	> 90% as determined by SDS-PAGE.
<b>Notes</b>	Repeated freezing and thawing is not recommended. Store working aliquots at 4 centigrade for up to one week.
<b>Storage</b>	The shelf life is related to many factors, storage state, buffer ingredients, storage temperature and the stability of the protein itself. Generally, the shelf life of liquid form is 6 months at -20 centigrade/-80 centigrade. The shelf life of lyophilized form is 12 months at -20 centigrade/-80 centigrade.
<b>Concentration</b>	A hardcopy of COA with concentration instruction is sent along with the products.

## GENE INFORMATION

<b>Gene Name</b>	KRT17 keratin 17 [ <i>Bos taurus</i> (cattle) ]
<b>Official Symbol</b>	KRT17

 Tel: 1-631-559-9269 1-516-512-3133

 Email: [info@creative-biomart.com](mailto:info@creative-biomart.com)  Fax: 1-631-938-8127

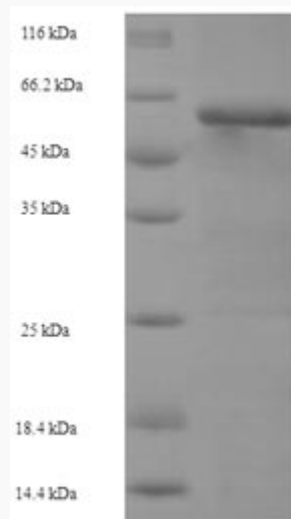
 45-1 Ramsey Road, Shirley, NY 11967, USA

Gene ID 281889

mRNA Refseq NM\_001105322

Protein Refseq NP\_001098792

UniProt ID A1L595



(Tris-Glycine gel) Discontinuous SDS-PAGE (reduced) with 5% enrichment gel and 15% separation gel.

Tel: 1-631-559-9269 1-516-512-3133

Email: [info@creative-biomart.com](mailto:info@creative-biomart.com) Fax: 1-631-938-8127

45-1 Ramsey Road, Shirley, NY 11967, USA