

Recombinant Full Length Human KRT18 Protein, N-His-tagged

Cat. No. KRT18-1585HFL Lot. No. (See product label)

SPECIFICATION

Product Overview	Recombinant Full Length Human KRT18 Protein, fused to His-tag at N-terminus, was expressed in E. coli.
Species	Human
Source	E.coli
Description	KRT18 encodes the type I intermediate filament chain keratin 18. Keratin 18, together with its filament partner keratin 8, are perhaps the most commonly found members of the intermediate filament gene family. They are expressed in single layer epithelial tissues of the body. Mutations in this gene have been linked to cryptogenic cirrhosis. Two transcript variants encoding the same protein have been found for this gene.
Form	25mM Tris, pH8.0, 150 mM NaCl, 10% glycerol, 1 % Sarkosyl.
Molecular Mass	47.9 kDa
AA Sequence	A DNA sequence encoding human full-length KRT18.
Purity	> 80% as determined by SDS-PAGE and Coomassie blue staining.
Stability	Stable for 12 months from the date of receipt of the product under proper storage and handling conditions. Avoid repeated freeze-thaw cycles.
Storage	Store at -80 centigrade.

 Tel: 1-631-559-9269 1-516-512-3133

 Email: info@creative-biomart.com  Fax: 1-631-938-8127

 45-1 Ramsey Road, Shirley, NY 11967, USA

Concentration	>50 ug/mL as determined by microplate BCA method.
Preparation	Recombinant protein was captured through anti-DDK affinity column followed by conventional chromatography steps.
Protein Pathways	Pathogenic Escherichia coli infection
Full Length	Full L.

GENE INFORMATION

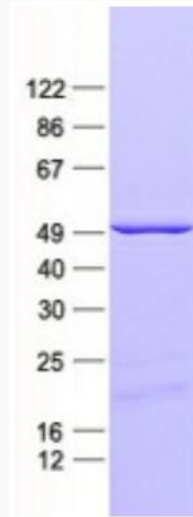
Gene Name	KRT18 keratin 18 [Homo sapiens (human)]
Official Symbol	KRT18
Synonyms	K18; CK-18; CYK18
Gene ID	3875
mRNA Refseq	NM_199187.2
Protein Refseq	NP_954657.1
MIM	148070
UniProt ID	P61769

 Tel: 1-631-559-9269 1-516-512-3133

 Email: info@creative-biomart.com  Fax: 1-631-938-8127

 45-1 Ramsey Road, Shirley, NY 11967, USA

SDS-PAGE



 Tel: 1-631-559-9269 1-516-512-3133

 Email: info@creative-biomart.com  Fax: 1-631-938-8127

 45-1 Ramsey Road, Shirley, NY 11967, USA