

# Recombinant Human KRT19 protein(81-400 aa), C-His-tagged

**Cat. No.** KRT19-2604H    **Lot. No.** (See product label)

## SPECIFICATION

<b>Product Overview</b>	Recombinant Human KRT19 protein(P08727)(81-400 aa), fused with C-terminal His tag, was expressed in E. coli.
<b>Species</b>	Human
<b>Source</b>	E.coli
<b>ProteinLength</b>	81-400 aa
<b>Form</b>	0.15 M Phosphate buffered saline
<b>Molecular Mass</b>	38 kDa
<b>Storage</b>	Shipped on dry ice. Avoid repeated freeze-thaw cycles. Upon receipt, 2 days when stored at 2 to 8 °C after thawing. Up to 12 months when aliquoted and stored at -20 to -80°C.
<b>Reconstitution</b>	It is recommended that sterile water be added to the vial to prepare a stock solution of 0.2 ug/ul. Centrifuge the vial at 4°C before opening to recover the entire contents.
<b>AA Sequence</b>	KLTMQNLNDRSLASYLDKVRALAAANGELEVKIRDWYQKQGGPSRDYSHYYTTIQD LRDKILGATIENSRIVLQIDNARLAADDFRTKFETEALRMSVEADINGLRRVLDELTL ARTDLEMQIEGLKEELAYLKKNHEEEIISTLRGQVGGQVSVEVDSAPGTDLAKILSDM RSQYEVMAEQNRKDAEAWFTSRTEELNREVAGHTEQLQMSRSEVTDLRRTLQGLE IELQSQLSMKAALEDTLAETEARFGAQLAHIQALISGIEAQLGDVRADSERQNQEYQ

 Tel: 1-631-559-9269    1-516-512-3133

 Email: [info@creative-biomart.com](mailto:info@creative-biomart.com)     Fax: 1-631-938-8127

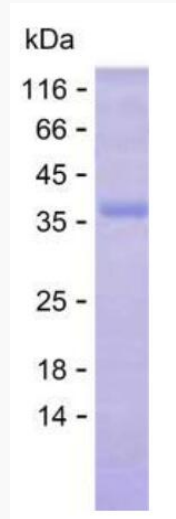
 45-1 Ramsey Road, Shirley, NY 11967, USA

RLMDIKSRLEQEIATYRSLLEGQEDHYNNLSASKVL

**GENE INFORMATION****Gene Name** KRT19 keratin 19 [ Homo sapiens ]**Official Symbol** KRT19**Synonyms** KRT19; keratin 19; keratin, type I cytoskeletal 19; 40 kDa keratin intermediate filament; CK19; cytokeratin 19; K1CS; K19; keratin; type I cytoskeletal 19; type I; 40 kd; MGC15366; CK-19; keratin-19; cytokeratin-19; keratin, type I, 40-kd; 40-kDa keratin intermediate filament;**Gene ID** 3880**mRNA Refseq** NM\_002276**Protein Refseq** NP\_002267**MIM** 148020**UniProt ID** P08727 Tel: 1-631-559-9269 1-516-512-3133 Email: [info@creative-biomart.com](mailto:info@creative-biomart.com)  Fax: 1-631-938-8127 45-1 Ramsey Road, Shirley, NY 11967, USA



SDS-PAGE



Tel: 1-631-559-9269 1-516-512-3133

Email: [info@creative-biomart.com](mailto:info@creative-biomart.com) Fax: 1-631-938-8127

45-1 Ramsey Road, Shirley, NY 11967, USA