

Recombinant Full Length Human KRT19 Protein, C-Flag-tagged

Cat. No. KRT19-360HFL **Lot. No.** (See product label)

SPECIFICATION

Product Overview	Recombinant Full Length Human KRT19 Protein, fused to Flag-tag at C-terminus, was expressed in Mammalian cells.
Species	Human
Source	Mammalian Cells
Description	The protein encoded by this gene is a member of the keratin family. The keratins are intermediate filament proteins responsible for the structural integrity of epithelial cells and are subdivided into cytokeratins and hair keratins. The type I cytokeratins consist of acidic proteins which are arranged in pairs of heterotypic keratin chains. Unlike its related family members, this smallest known acidic cytokeratin is not paired with a basic cytokeratin in epithelial cells. It is specifically expressed in the periderm, the transiently superficial layer that envelops the developing epidermis. The type I cytokeratins are clustered in a region of chromosome 17q12-q21.
Form	25 mM Tris HCl, pH 7.3, 100 mM glycine, 10% glycerol.
Molecular Mass	43.9 kDa
AA Sequence	MTSYSYRQSSATSSFGLGGGSVRFPGVAFRAPSIIHGGSGGRGVSVSSARFVSS SSSGGYGGGYGGVLT ASDGLLAGNEKLTMQNLNDRLASYLKVRALAAANGELEV KIRDWYQKQGGPSPRDYSHYYTTIQDLRDK ILGATIENSRIVLQIDNARLAADDFRFK FETEQALRMSVEADINGLRRVLDLTLARTDLEMQIEGLKEE LAYLKKNHHEEEISTLR

 Tel: 1-631-559-9269 1-516-512-3133

 Email: info@creative-biomart.com  Fax: 1-631-938-8127

 45-1 Ramsey Road, Shirley, NY 11967, USA

GQVGGQVSVEVDSAPGTDLAKILSDMRSQYEVMAEQNRKDAEAWFTSRTEELNR
 EVAGHTEQLQMSRSEVTDLRRTLQGLEIELQSQLSMKAALEDTLAETEARFGAQLA
 HIQALISGIEAQLG
 DVRADSERQNQEYQRLMDIKSRLEQEIATYRSLLEGQEDHYNNLSASKVLTRTRPLE
 QKLISEEDLAANDILDYKDDDDKV

Purity > 80% as determined by SDS-PAGE and Coomassie blue staining.

Stability Stable for 12 months from the date of receipt of the product under proper storage and handling conditions. Avoid repeated freeze-thaw cycles.

Storage Store at -80 centigrade.

Concentration >50 ug/mL as determined by microplate BCA method.

Preparation Recombinant protein was captured through anti-DDK affinity column followed by conventional chromatography steps.

Full Length Full L.

GENE INFORMATION

Gene Name [KRT19 keratin 19 \[Homo sapiens \(human\) \]](#)

Official Symbol [KRT19](#)

Synonyms K19; CK19; K1CS

Gene ID [3880](#)

mRNA Refseq [NM_002276.5](#)

 Tel: 1-631-559-9269 1-516-512-3133

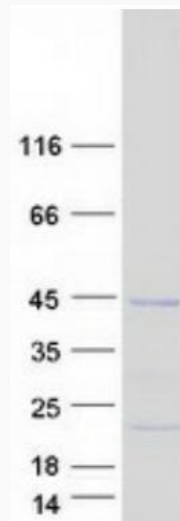
 Email: info@creative-biomart.com  Fax: 1-631-938-8127

 45-1 Ramsey Road, Shirley, NY 11967, USA

Protein Refseq NP_002267.2

MIM 148020

UniProt ID P08727



Coomassie blue staining of purified KRT19 protein.

 Tel: 1-631-559-9269 1-516-512-3133

 Email: info@creative-biomart.com  Fax: 1-631-938-8127

 45-1 Ramsey Road, Shirley, NY 11967, USA