

Recombinant Human KRT19 Protein (Met1-Leu400), C-His tagged

Cat. No. KRT19-4396H Lot. No. (See product label)

SPECIFICATION

Product Overview	Recombinant human KRT19 / CK19 (Met1-Leu400) fused with the C-His tag was expressed in E. coli.
Species	Human
Source	E.coli
ProteinLength	Met1-Leu400
Form	Lyophilized powder/frozen liquid
Molecular Mass	45.08 kDa
Purity	>90% as determined by SDS-PAGE.
Notes	For research use only.
Storage	Use a manual defrost freezer and avoid repeated freeze thaw cycles. Store at 2 to 8 centigrade for one week. Store at -20 to -80 centigrade for twelve months from the date of receipt.
Storage Buffer	0.01M PBS, pH 7.4, 0.02% NLS
Reconstitution	Reconstitute in sterile water for a stock solution.

 Tel: 1-631-559-9269 1-516-512-3133

 Email: info@creative-biomart.com  Fax: 1-631-938-8127

 45-1 Ramsey Road, Shirley, NY 11967, USA

Shipping

They are shipped out with dry ice/blue ice unless customers require otherwise.

GENE INFORMATION
Gene Name

KRT19 keratin 19 [Homo sapiens (human)]

Official Symbol

KRT19

Synonyms

KRT19; keratin 19; keratin, type I cytoskeletal 19; 40 kDa keratin intermediate filament; CK19; cytokeratin 19; K1CS; K19; keratin; type I cytoskeletal 19; type I; 40 kd; MGC15366; CK-19; keratin-19; cytokeratin-19; keratin, type I, 40-kd; 40-kDa keratin intermediate filament;

Gene ID

3880

mRNA Refseq

NM_002276

Protein Refseq

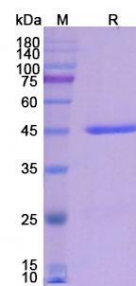
NP_002267

MIM

148020

UniProt ID

P08727

SDS-PAGE


 Tel: 1-631-559-9269 1-516-512-3133

 Email: info@creative-biomart.com  Fax: 1-631-938-8127

 45-1 Ramsey Road, Shirley, NY 11967, USA