

## Recombinant Human KRT19 Protein, GST-tagged

**Cat. No.** KRT19-4865H    **Lot. No.** (See product label)

### SPECIFICATION

<b>Product Overview</b>	Human KRT19 full-length ORF ( AAH07628.1, 1 a.a. - 400 a.a.) recombinant protein with GST-tag at N-terminal.
<b>Species</b>	Human
<b>Source</b>	Wheat Germ
<b>Description</b>	The protein encoded by this gene is a member of the keratin family. The keratins are intermediate filament proteins responsible for the structural integrity of epithelial cells and are subdivided into cytokeratins and hair keratins. The type I cytokeratins consist of acidic proteins which are arranged in pairs of heterotypic keratin chains. Unlike its related family members, this smallest known acidic cytokeratin is not paired with a basic cytokeratin in epithelial cells. It is specifically expressed in the periderm, the transiently superficial layer that envelops the developing epidermis. The type I cytokeratins are clustered in a region of chromosome 17q12-q21. [provided by RefSeq]
<b>Molecular Mass</b>	69.63 kDa
<b>AA Sequence</b>	MTSYSYRQSSATSSFGLGGGSVRFPGVAFRAPSIHGGSGGRGVSVSSARFVSS SSSGGYGGGYGGVLTASDGLLAGNEKLTMQNLNDRLASYLDKVRALEAANGELEV KIRDWYQKQGPGPSRDYSHYYTTIQDLRDKILGATIENSRIVLQIDNARLAADDFRTK FETEALRMSVEADINGLRRVLDLTLARTDLEMQIEGLKEELAYLKKNHHEEEISTLR GQVGGQVSVEVDSAPGTDLAKILSDMRSQYEVMAEQNRKDAEAWFTSRTEELNRE

 Tel: 1-631-559-9269    1-516-512-3133

 Email: [info@creative-biomart.com](mailto:info@creative-biomart.com)     Fax: 1-631-938-8127

 45-1 Ramsey Road, Shirley, NY 11967, USA

VAGHTEQLQMSRSEVTDLRRTLQGLEIELQSQLSMKAALEDTLAETEARFGAQLAHI  
 QALISGIEAQLGDVRADSERQNQEYQRLMDIKSRLEQEIATYRSLLEGQEDHYNNLS  
 ASKVL

<b>Applications</b>	Enzyme-linked Immunoabsorbent Assay Western Blot (Recombinant protein) Antibody Production Protein Array
<b>Notes</b>	Best use within three months from the date of receipt of this protein.
<b>Storage</b>	Store at -80 centigrade. Aliquot to avoid repeated freezing and thawing.
<b>Storage Buffer</b>	50 mM Tris-HCl, 10 mM reduced Glutathione, pH=8.0 in the elution buffer.

## GENE INFORMATION

<b>Gene Name</b>	<a href="#">KRT19 keratin 19 [ Homo sapiens ]</a>
<b>Official Symbol</b>	<a href="#">KRT19</a>
<b>Synonyms</b>	KRT19; keratin 19; keratin, type I cytoskeletal 19; 40 kDa keratin intermediate filament; CK19; cytokeratin 19; K1CS; K19; keratin; type I cytoskeletal 19; type I; 40 kd; MGC15366; CK-19; keratin-19; cytokeratin-19; keratin, type I, 40-kd; 40-kDa keratin intermediate filament;
<b>Gene ID</b>	<a href="#">3880</a>
<b>mRNA Refseq</b>	<a href="#">NM_002276</a>
<b>Protein Refseq</b>	<a href="#">NP_002267</a>

 Tel: 1-631-559-9269 1-516-512-3133

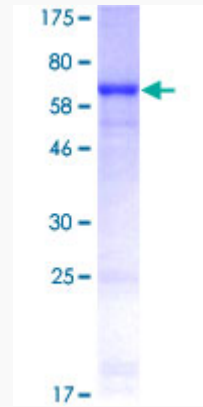
 Email: [info@creative-biomart.com](mailto:info@creative-biomart.com)  Fax: 1-631-938-8127

 45-1 Ramsey Road, Shirley, NY 11967, USA

MIM 148020

UniProt ID P08727

**Quality Control  
Testing**



12.5% SDS-PAGE Stained with Coomassie Blue

 Tel: 1-631-559-9269 1-516-512-3133

 Email: [info@creative-biomart.com](mailto:info@creative-biomart.com)  Fax: 1-631-938-8127

 45-1 Ramsey Road, Shirley, NY 11967, USA