

## Recombinant Human KRT20 Protein, GST-tagged

Cat. No. KRT20-4864H Lot. No. (See product label)

### SPECIFICATION

<b>Product Overview</b>	Human KRT20 full-length ORF ( AAH31559, 1 a.a. - 424 a.a.) recombinant protein with GST-tag at N-terminal.
<b>Species</b>	Human
<b>Source</b>	Wheat Germ
<b>Description</b>	The protein encoded by this gene is a member of the keratin family. The keratins are intermediate filament proteins responsible for the structural integrity of epithelial cells and are subdivided into cytokeratins and hair keratins. The type I cytokeratins consist of acidic proteins which are arranged in pairs of heterotypic keratin chains. This cytokeratin is a major cellular protein of mature enterocytes and goblet cells and is specifically expressed in the gastric and intestinal mucosa. The type I cytokeratin genes are clustered in a region of chromosome 17q12-q21. [provided by RefSeq
<b>Molecular Mass</b>	72.38 kDa
<b>AA Sequence</b>	MDFSRRSFHRSLSSSLQAPVVSTVGMQRLGTTSPVYGGAGGRGIRISNSRHTVNYG SDLTGGGDLFVGNEKMAMQNLNDRLASYLEKVRTLQSNKLEVQIKQWYETNAP RAGRDYSAYYRQIEELRSQIKDAQLQNARCVLQIDNAKLAEDFRLKYETERGIRLTV EADLQGLNKVFDDDLTLHKTDLEIQIEELNKDLALLKKEHQEEVDGLHKHLGNTVNVEV DAAPGLNLGVIMNEMRQKYEVMAQKNLQEAKEQFERQTAVLQQQVTVNTEELKGT EVQLTELRRTSQSLEIELQSHLSMKESLEHTLEETKARYSSQLANLQSLSSLEAQLM QIRSNMERQNNEYHILLDIKTRLEQEIATYRRLLGEDVKTTEYQLSTLEERDIKKTRK

 Tel: 1-631-559-9269 1-516-512-3133

 Email: [info@creative-biomart.com](mailto:info@creative-biomart.com)  Fax: 1-631-938-8127

 45-1 Ramsey Road, Shirley, NY 11967, USA

IKTVVQEVVDGKVVSSSEVKEVEENI

**Applications**

Enzyme-linked Immunoabsorbent Assay  
 Western Blot (Recombinant protein)  
 Antibody Production  
 Protein Array

**Notes**

Best use within three months from the date of receipt of this protein.

**Storage**

Store at -80 centigrade. Aliquot to avoid repeated freezing and thawing.

**Storage Buffer**

50 mM Tris-HCl, 10 mM reduced Glutathione, pH=8.0 in the elution buffer.

## GENE INFORMATION

**Gene Name**

[KRT20 keratin 20 \[ Homo sapiens \]](#)

**Official Symbol**

[KRT20](#)

**Synonyms**

KRT20; keratin 20; keratin, type I cytoskeletal 20; CK20; K20; MGC35423; keratin-20; protein IT; cytokeratin 20; cytokeratin-20; CD20; CK-20; KRT21;

**Gene ID**

[54474](#)

**mRNA Refseq**

[NM\\_019010](#)

**Protein Refseq**

[NP\\_061883](#)

**MIM**

[608218](#)

**UniProt ID**

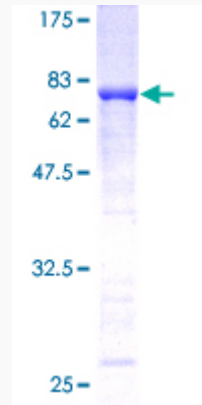
[P35900](#)

 Tel: 1-631-559-9269 1-516-512-3133

 Email: [info@creative-biomart.com](mailto:info@creative-biomart.com)  Fax: 1-631-938-8127

 45-1 Ramsey Road, Shirley, NY 11967, USA

**Quality Control  
Testing**



12.5% SDS-PAGE Stained with Coomassie Blue

 Tel: 1-631-559-9269 1-516-512-3133

 Email: [info@creative-biomart.com](mailto:info@creative-biomart.com)  Fax: 1-631-938-8127

 45-1 Ramsey Road, Shirley, NY 11967, USA