

## Recombinant Human KRT24 Protein, His-tagged

Cat. No. KRT24-01H Lot. No. (See product label)

### SPECIFICATION

<b>Product Overview</b>	Recombinant Human KRT24 Protein, fused to His tag, was expressed in E. coli.
<b>Species</b>	Human
<b>Source</b>	E.coli
<b>Form</b>	PBS, pH 7.4
<b>Molecular Mass</b>	The protein has a calculated MW of 55.08 kDa.
<b>AA Sequence</b>	<p>MSCSSRASSSRAGGSSSARVSAGGSSFSSGSRGGLGGSSAQGFRGGASSCSLSG  GSSGAFGGSFGGGFGSCSVGGGFGGASGSGTGFGGGSSFGGVSGFGRGSGFCG  SSRFSSGATGGFYSGGGMGGVGDGGLFSGGEKQTMQNLNDRNLANYLDKVRAL  EEANTDLENKIKEWYDKYGP GSGDGGSGRDYSKYYSIIEDLRNQIIAATVENAGIILHI  DNARLAADDFRLKYENELCLRQSVEADINGLRKVLDDLTMTSRDLEMQIESFTEELA  YLRKNHEEEMKNMQGSSGGEVTVEMNAAPGTDLTKLLNDMRAQYEELAEQNRRE  AEERFNKQSASLQAQISTDAGAATSAKNEITELKRTLQALEIELQSQLAMKSSLEGTL  ADTEAGYVAQLSEIQTQISALEEEICQIWGETKQCQNAEYKQLLDIKTRLEVEIETYRRL  LDGEGGGSSFAEFGGRNSGSVNMGSRDLVSGDSRSGSCSGQGRDSSKTRVTKTI  VEELVDGKVVSSQVSSISEVKVK</p>
<b>Purity</b>	≥85%, by SDS-PAGE
<b>Storage</b>	Store it under sterile conditions at -20 to -80 °C. It is recommended that the protein be aliquoted for optimal storage. Avoid repeated freeze-thaw cycles.

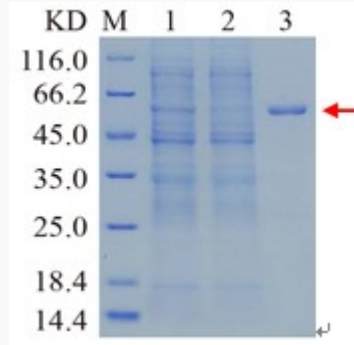
 Tel: 1-631-559-9269 1-516-512-3133

 Email: [info@creative-biomart.com](mailto:info@creative-biomart.com)  Fax: 1-631-938-8127

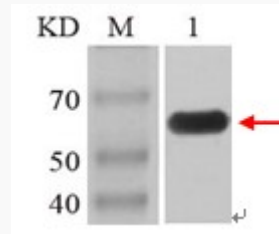
 45-1 Ramsey Road, Shirley, NY 11967, USA

**Concentration** 0.2 mg/ml

**SDS-PAGE**



**Western Blot**



 Tel: 1-631-559-9269 1-516-512-3133

 Email: [info@creative-biomart.com](mailto:info@creative-biomart.com)  Fax: 1-631-938-8127

 45-1 Ramsey Road, Shirley, NY 11967, USA