

# Recombinant Full Length Human KRT24 Protein, C-Flag-tagged

**Cat. No.** KRT24-1826HFL    **Lot. No.** (See product label)

## SPECIFICATION

<b>Product Overview</b>	Recombinant Full Length Human KRT24 Protein, fused to Flag-tag at C-terminus, was expressed in Mammalian cells.
<b>Species</b>	Human
<b>Source</b>	Mammalian Cells
<b>Description</b>	This gene encodes a member of the type I (acidic) keratin family, which belongs to the superfamily of intermediate filament (IF) proteins. Keratins are heteropolymeric structural proteins which form the intermediate filament. These filaments, along with actin microfilaments and microtubules, compose the cytoskeleton of epithelial cells. The type I keratin genes are clustered in a region of chromosome 17q12-q21.
<b>Form</b>	25 mM Tris HCl, pH 7.3, 100 mM glycine, 10% glycerol.
<b>Molecular Mass</b>	54.9 kDa
<b>AA Sequence</b>	MSCSSRASSSRAGGSSSARVSAGGSSFSSGSRGGLGGSSAQGFRGGASSCSLSG GSSGAFGGSFGGGFGS CSVGGGFGGASGSGTGFGGGSSFGGVSGFGRGSGFC GSSRFSSGATGGFYSGGGMGGGVGDGGLFSGGE KQTMQNLDRLANYLDKVR ALEEANTDLENKIKEWYDKYGPSSGDGGSGRDYSKYYSIIEDLRNQIIAAT VENAGII LHIDNARLAADD FRLKYENELCLRQSVEADINGLRKVLDDLTMTSDLEMQIESFTEE LAYLR KNHEEEMKNMQGSSGGEVTVEMNAAPGTDLTKLLNDMRAQYEELAEQNR REAEERFNKQSASLQAQISTD AGAATSAKNEITELKRTLQALEIELQSQLAMKSSLE

 Tel: 1-631-559-9269    1-516-512-3133

 Email: [info@creative-biomart.com](mailto:info@creative-biomart.com)     Fax: 1-631-938-8127

 45-1 Ramsey Road, Shirley, NY 11967, USA

GTLADTEAGYVAQLSEIQTQISALEEEICQIWGE TKCQNAEYKQLLDIKTRLEVEIETY  
 RRLLDGEGGGSSFAEFGGRNSGSVNMGSRDLVSGDSRSGSCSGQG RDSSKTRV  
 TKTIVEELVDGKVVSSQVSSISEVKVK TRTRPLEQKLISEEDLAANDILDYKDDDDKV

**Purity** > 80% as determined by SDS-PAGE and Coomassie blue staining.

**Stability** Stable for 12 months from the date of receipt of the product under proper storage and handling conditions. Avoid repeated freeze-thaw cycles.

**Storage** Store at -80 centigrade.

**Concentration** >50 ug/mL as determined by microplate BCA method.

**Preparation** Recombinant protein was captured through anti-DDK affinity column followed by conventional chromatography steps.

**Full Length** Full L.

## GENE INFORMATION

**Gene Name** [KRT24 keratin 24 \[ Homo sapiens \(human\) \]](#)

**Official Symbol** [KRT24](#)

**Synonyms** K24; KA24; CK-24

**Gene ID** [192666](#)

**mRNA Refseq** [NM\\_019016.3](#)

**Protein Refseq** [NP\\_061889.2](#)

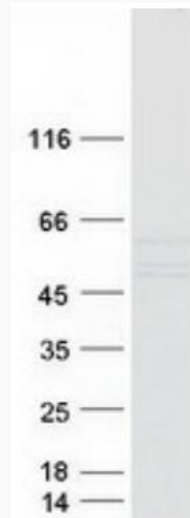
 Tel: 1-631-559-9269 1-516-512-3133

 Email: [info@creative-biomart.com](mailto:info@creative-biomart.com)  Fax: 1-631-938-8127

 45-1 Ramsey Road, Shirley, NY 11967, USA

**MIM** 607742

**UniProt ID** Q2M2I5



Coomassie blue staining of purified KRT24 protein.

 Tel: 1-631-559-9269 1-516-512-3133

 Email: [info@creative-biomart.com](mailto:info@creative-biomart.com)  Fax: 1-631-938-8127

 45-1 Ramsey Road, Shirley, NY 11967, USA