

Recombinant Human KRT24 protein, His-tagged

Cat. No. KRT24-211H **Lot. No.** (See product label)

SPECIFICATION

Product Overview	Recombinant Human KRT24 Protein (Leu314-Lys525) is produced by E. coli expression system. This protein is fused with a His tag at the N-terminal.
Species	Human
Source	E.coli
ProteinLength	Leu314-Lys525
Form	Lyophilized from sterile PBS, pH7.4, containing 0.01% SKL, 1mM DTT, 5% Trehalose and Proclin300.
Molecular Mass	Predicted Molecular Mass: 26.9kDa; Accurate Molecular Mass: 29kDa(Analysis of differences refer to the manual).
Endotoxin	<1.0EU per 1g (determined by the LAL method).
Purity	> 95%
Applications	Positive Control; Immunogen; SDS-PAGE; WB.
Stability	The thermal stability is described by the loss rate. The loss rate was determined by accelerated thermal degradation test, that is, incubate the protein at 37 centigrade for 48h, and no obvious degradation and precipitation were observed. The loss rate is

 Tel: 1-631-559-9269 1-516-512-3133

 Email: info@creative-biomart.com  Fax: 1-631-938-8127

 45-1 Ramsey Road, Shirley, NY 11967, USA

Storage Avoid repeated freeze/thaw cycles. Store at 2-8 centigrade for one month. Aliquot and store at -80 centigrade for 12 months.

Reconstitution It is recommended that sterile water be added to the vial to prepare a stock solution of 0.2 mg/ml. Centrifuge the vial at 4 centigrade before opening to recover the entire contents.

GENE INFORMATION

Gene Name KRT24 keratin 24 [Homo sapiens]

Official Symbol KRT24

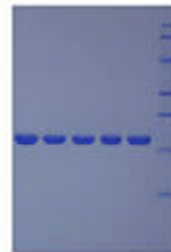
Synonyms KRT24; keratin 24; FLJ20261; MGC138169; MGC138173; CK-24; keratin-24; cytokeratin-24; type I keratin-24; K24; KA24;

Gene ID 192666

mRNA Refseq NM_019016

Protein Refseq NP_061889

MIM 607742



 Tel: 1-631-559-9269 1-516-512-3133

 Email: info@creative-biomart.com  Fax: 1-631-938-8127

 45-1 Ramsey Road, Shirley, NY 11967, USA