

Recombinant Human KRT24 protein, His-tagged

Cat. No. KRT24-7543H Lot. No. (See product label)

SPECIFICATION

Product Overview	Recombinant Human KRT24 protein(Q2M2I5)(1-525aa), fused with C-terminal His tag, was expressed in Insect cells.
Species	Human
Source	Insect cells
ProteinLength	1-525aa
Form	If the delivery form is liquid, the default storage buffer is Tris/PBS-based buffer, 5%-50% glycerol. If the delivery form is lyophilized powder, the buffer before lyophilization is Tris/PBS-based buffer, 6% Trehalose, pH 8.0.
Molecular Mass	60.7 kDa
Purity	Greater than 85% as determined by SDS-PAGE.
Storage	Store at -20°C/-80°C upon receipt, aliquoting is necessary for mutiple use. Avoid repeated freeze-thaw cycles.
Reconstitution	We recommend that this vial be briefly centrifuged prior to opening to bring the contents to the bottom. Please reconstitute protein in deionized sterile water to a concentration of 0.1-1.0 mg/mL. We recommend to add 5-50% of glycerol (final concentration) and aliquot for long-term storage at -20°C/-80°C.

 Tel: 1-631-559-9269 1-516-512-3133

 Email: info@creative-biomart.com  Fax: 1-631-938-8127

 45-1 Ramsey Road, Shirley, NY 11967, USA

AA Sequence

MSCSSRASSSRAGGSSSARVSAGGSSFSSGSRCLGGSSAQGFRGGASSCSLSG
 GSSGAFGGSFGGGFGSCSVGGGFGGASGSGTGFGGGSSFGGVSGFGRGSGFCG
 SSRFSSGATGGFYSYGGGMGGVGDGGLFSGGEKQTMQNLNDRNLANYLDKVRAL
 EEANTDLENKIKEWYDKYGP GSGDGGSGRDYSKYYSIIEDLRNQIIAATVENAGIILHI
 DNARLAADDFRLKYENELCLRQSVEADINGLRKVLDDLTMTSRDLEMQIESFTEELA
 YLRKNHEEEMKNMQGSSGGEVTVEMNAAPGTDLTLLNDMRAQYEELAEQNRRE
 AEERFNKQSASLQAQISTDAGAATSAKNEITELKRTLQALEIELQSQLAMKSSLEGTL
 ADTEAGYVAQLSEIQTQISALEEEICQIWGETKCQNAEYKQLLDIKTRLEVEIETYRRL
 LDGEGGGSSFAEFGGRNSGSVNMGSRDLVSGDSRSGSCSGQGRDSSKTRVTKTI
 VEELVDGKVVSSQVSSISEVKVK

GENE INFORMATION

Gene Name [KRT24 keratin 24 \[Homo sapiens \]](#)

Official Symbol [KRT24](#)

Synonyms [KRT24](#); [keratin 24](#); [keratin, type I cytoskeletal 24](#); [FLJ20261](#); [MGC138169](#); [MGC138173](#); [CK-24](#); [keratin-24](#); [cytokeratin-24](#); [type I keratin-24](#); [K24](#); [KA24](#);

Gene ID [192666](#)

mRNA Refseq [NM_019016](#)

Protein Refseq [NP_061889](#)

MIM [607742](#)

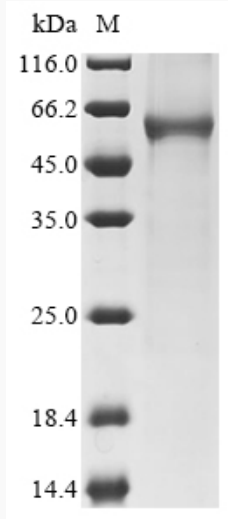
UniProt ID [Q2M215](#)

 Tel: 1-631-559-9269 1-516-512-3133

 Email: info@creative-biomart.com  Fax: 1-631-938-8127

 45-1 Ramsey Road, Shirley, NY 11967, USA

SDS-PAGE



 Tel: 1-631-559-9269 1-516-512-3133

 Email: info@creative-biomart.com  Fax: 1-631-938-8127

 45-1 Ramsey Road, Shirley, NY 11967, USA