

Recombinant Human KRT25 Protein, GST-tagged

Cat. No. KRT25-4859H Lot. No. (See product label)

SPECIFICATION

Product Overview Human KRT25 full-length ORF (AAI46489.1, 1 a.a. - 450 a.a.) recombinant protein with GST-tag at N-terminal.

Species Human

Source Wheat Germ

Description This gene encodes a member of the type I (acidic) keratin family, which belongs to the superfamily of intermediate filament (IF) proteins. Keratins are heteropolymeric structural proteins which form the intermediate filament. These filaments, along with actin microfilaments and microtubules, compose the cytoskeleton of epithelial cells. The type I keratin genes are clustered in a region of chromosome 17q12-q21. [provided by RefSeq]

Molecular Mass 76.45 kDa

AA Sequence

```
MSLRLSSASRRSCRPTTGSRLRYGGGTSFGTGNSCGISGIGSGFSSAFGGSSSGG
NTGGGNPCAGFTVNERGLLSGNEKVMTMQLNDRLASYLDSVHALEEANADLEQKIK
GWYEKFGPGSCRGLDHDYSRYFPIIDDLKNQIIASTTSNANAVLQIDNARLTADDFRL
KYENELALHQSVEADVNLRRVLDEITLCRTDLEIQYETLSEEMTYLKKNHKEEMQV
LQCAAGGNVNEMNAAPGVDLTVLLNNMRAEYEALAEQNRRAEAWFNEKSASLQ
QQISEDVGATTSARNELTEMKRTLQTLIEIQSLLATKHSLECSLTETESNYCAQLAQ
IQAQIGALEEQHLHQVRTETEGQKLEYEQLLDIKLHLEKEIETYCLLIGGDDGACKSGG
YKSKDYGSGNVGSQVKDPAKAIIVKKVLEEVDQRSKILTTRLHSLEEKSQSN
```

 Tel: 1-631-559-9269 1-516-512-3133

 Email: info@creative-biomart.com  Fax: 1-631-938-8127

 45-1 Ramsey Road, Shirley, NY 11967, USA

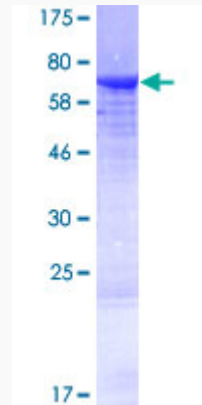
Applications	<p>Enzyme-linked Immunoabsorbent Assay</p> <p>Western Blot (Recombinant protein)</p> <p>Antibody Production</p> <p>Protein Array</p>
Notes	Best use within three months from the date of receipt of this protein.
Storage	Store at -80 centigrade. Aliquot to avoid repeated freezing and thawing.
Storage Buffer	50 mM Tris-HCl, 10 mM reduced Glutathione, pH=8.0 in the elution buffer.
GENE INFORMATION	
Gene Name	KRT25 keratin 25 [Homo sapiens (human)]
Official Symbol	KRT25
Synonyms	KRT25; keratin 25; ARWH3; KRT25A; KRT24IRS1; keratin, type I cytoskeletal 25; CK-25; K25; K25A; cytokeratin-25; keratin 25, type I; keratin-25A; type I inner root sheath specific keratin 25 irs1; type I inner root sheath-specific keratin-K25irs1
Gene ID	147183
mRNA Refseq	NM_181534
Protein Refseq	NP_853512
MIM	616646
UniProt ID	Q7Z3Z0

 Tel: 1-631-559-9269 1-516-512-3133

 Email: info@creative-biomart.com  Fax: 1-631-938-8127

 45-1 Ramsey Road, Shirley, NY 11967, USA

**Quality Control
Testing**



12.5% SDS-PAGE Stained with Coomassie Blue

 Tel: 1-631-559-9269 1-516-512-3133

 Email: info@creative-biomart.com  Fax: 1-631-938-8127

 45-1 Ramsey Road, Shirley, NY 11967, USA