

Recombinant Human KRT28 Protein, GST-tagged

Cat. No. KRT28-4857H **Lot. No.** (See product label)

SPECIFICATION

Product Overview	Human KRT28 full-length ORF (AAI48795.1, 1 a.a. - 464 a.a.) recombinant protein with GST-tag at N-terminal.
Species	Human
Source	Wheat Germ
Description	<p>This gene encodes a member of the type I (acidic) keratin family, which belongs to the superfamily of intermediate filament (IF) proteins. Keratins are heteropolymeric structural proteins which form the intermediate filament. These filaments, along with actin microfilaments and microtubules, compose the cytoskeleton of epithelial cells. The type I keratin genes are clustered in a region of chromosome 17q12-q21. [provided by RefSeq]</p>
Molecular Mass	77.99 kDa
AA Sequence	<pre>MSLQFSNGSRHVCLRSGAGSVRPLNGGAGFAGSSACGGSVAGSEFSCALGGGLG SVPGGSHAGGALGNAACIGFAGSEGGLLSGNEKVTMQNLNDRLASYLNDNVRAL ANAELERKIKGWYEKYGPGSCRGLDHDYSRYHLTIEDLKNKIISSTTTNANVILQIDNA RLAADD FRLKYENELTLHQNVEADINGLRRVLDLTCRTDQELQYESLSEEMTYLK KNHEEEMKALQCAAGGNVNVEMNAAPGVDLAVLLNNMRAEYEALAEQNRKDAEA WFNEKSASLQQQISHDGAATFARSQ LTEMRRTLQTLEIQLQSLMATKHSLECSLTE TESNYCTQLAQIQAQIGALEEQLHQVRTETEGQKLEYEHLLDVKVHLEKEIETYCR LI DGDGNSCSKSKGFGSGSPGNSSKDLSKTTLVKTVVEELDQRGKVLSSRIHSIEEKTS</pre>

 Tel: 1-631-559-9269 1-516-512-3133

 Email: info@creative-biomart.com  Fax: 1-631-938-8127

 45-1 Ramsey Road, Shirley, NY 11967, USA



KMTNGKTEQRVPP

Applications

Enzyme-linked Immunoabsorbent Assay
Western Blot (Recombinant protein)
Antibody Production
Protein Array

Notes

Best use within three months from the date of receipt of this protein.

Storage

Store at -80 centigrade. Aliquot to avoid repeated freezing and thawing.

Storage Buffer

50 mM Tris-HCl, 10 mM reduced Glutathione, pH=8.0 in the elution buffer.

GENE INFORMATION

Gene Name

[KRT28 keratin 28 \[Homo sapiens \(human\) \]](#)

Official Symbol

[KRT28](#)

Synonyms

KRT28; keratin 28; KRT25D; K25IRS4; keratin, type I cytoskeletal 28; CK-28; K25D; K28; cytokeratin-28; keratin 28, type I; keratin-25D; type I inner root sheath specific keratin 25 irs4; type I inner root sheath-specific keratin-K25irs4

Gene ID

[162605](#)

mRNA Refseq

[NM_181535](#)

Protein Refseq

[NP_853513](#)

MIM

[616677](#)

Tel: 1-631-559-9269 1-516-512-3133

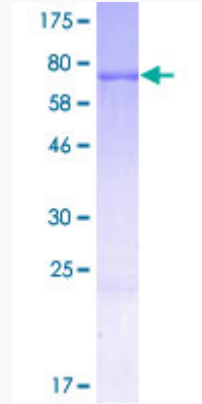
Email: info@creative-biomart.com Fax: 1-631-938-8127

45-1 Ramsey Road, Shirley, NY 11967, USA

UniProt ID

Q7Z3Y7

Quality Control
Testing



12.5% SDS-PAGE Stained with Coomassie Blue

 Tel: 1-631-559-9269 1-516-512-3133

 Email: info@creative-biomart.com  Fax: 1-631-938-8127

 45-1 Ramsey Road, Shirley, NY 11967, USA