

Recombinant Human KRT31 protein, His-tagged

Cat. No. KRT31-4543H Lot. No. (See product label)

SPECIFICATION

Product Overview	Recombinant Human KRT31 protein(Q15323)(1-416aa), fused with C-terminal His tag, was expressed in E.coli.
Species	Human
Source	E.coli
ProteinLength	1-416aa
Form	If the delivery form is liquid, the default storage buffer is Tris/PBS-based buffer, 5%-50% glycerol. If the delivery form is lyophilized powder, the buffer before lyophilization is Tris/PBS-based buffer, 6% Trehalose, pH 8.0.
Molecular Mass	54.1 kDa
Purity	Greater than 90% as determined by SDS-PAGE.
Storage	Store at -20°C/-80°C upon receipt, aliquoting is necessary for mutiple use. Avoid repeated freeze-thaw cycles.
Reconstitution	We recommend that this vial be briefly centrifuged prior to opening to bring the contents to the bottom. Please reconstitute protein in deionized sterile water to a concentration of 0.1-1.0 mg/mL. We recommend to add 5-50% of glycerol (final concentration) and aliquot for long-term storage at -20°C/-80°C.

 Tel: 1-631-559-9269 1-516-512-3133

 Email: info@creative-biomart.com  Fax: 1-631-938-8127

 45-1 Ramsey Road, Shirley, NY 11967, USA



AA Sequence

MPYNFCLPSLSCRTSCSSRPCVPPSCHSCTLPGACNIPANVSNCNWFCEGSFN
GSEKETMQFLNDRILASYLEKVRQLERDNAELENLIRERSQQQEPLLCPSYQSYFKTIEE
LQQKILCTKSENARLVVQIDNAKLAADDFRTKYQTELSLRQLVESDINGLRRILDELTL
CKSDLEAQVESLKEELLCLKSNHEQEVNTRLRCQLGDRLNVEVDAAPTVDLNRVLNE
TRSQYEALVETNRREVEQWFTTQTEELNKQVVSSEQLQSYQAEIIELRRTVNALEI
ELQAQHNLRDSENTLSEARYSSQLSQVQSLITNVESQLAEIRSDLERQNEQYQV
LLDVRARLECEINTYRSLLESEDCNLPSNPCATTNACSKPIGPCLSNPCTSCVPPAPC
TPCAPRPRCGPCNSFVR

GENE INFORMATION

Gene Name [KRT31 keratin 31 \[Homo sapiens \]](#)

Official Symbol [KRT31](#)

Synonyms KRT31; keratin 31; keratin, hair, acidic, 1 , KRTHA1; keratin, type I cuticular Ha1; Ha 1; hard keratin type I 1; K31; keratin-31; hard keratin, type I, 1; keratin, hair, acidic,1; hair keratin, type I Ha1; HA1; Ha-1; hHa1; KRTHA1; MGC138630;

Gene ID [3881](#)

mRNA Refseq [NM_002277](#)

Protein Refseq [NP_002268](#)

MIM [601077](#)

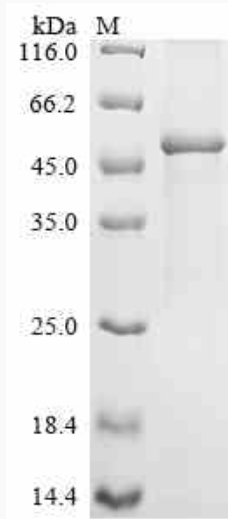
UniProt ID [Q15323](#)

Tel: 1-631-559-9269 1-516-512-3133

Email: info@creative-biomart.com Fax: 1-631-938-8127

45-1 Ramsey Road, Shirley, NY 11967, USA

SDS-PAGE



 Tel: 1-631-559-9269 1-516-512-3133

 Email: info@creative-biomart.com  Fax: 1-631-938-8127

 45-1 Ramsey Road, Shirley, NY 11967, USA