

## Recombinant Human KRT32 protein, His-tagged

Cat. No. KRT32-2744H Lot. No. (See product label)

### SPECIFICATION

<b>Product Overview</b>	Recombinant Human KRT32 protein(Q14532)(1-448aa), fused with C-terminal His tag, was expressed in E.coli.
<b>Species</b>	Human
<b>Source</b>	E.coli
<b>ProteinLength</b>	1-448a.a.
<b>Tag</b>	His
<b>Form</b>	If the delivery form is liquid, the default storage buffer is Tris/PBS-based buffer, 5%-50% glycerol. If the delivery form is lyophilized powder, the buffer before lyophilization is Tris/PBS-based buffer, 6% Trehalose, pH 8.0.
<b>Molecular Mass</b>	57.3 kDa
<b>Purity</b>	Greater than 90% as determined by SDS-PAGE.
<b>Storage</b>	Store at -20°C/-80°C upon receipt, aliquoting is necessary for mutiple use. Avoid repeated freeze-thaw cycles.
<b>Reconstitution</b>	We recommend that this vial be briefly centrifuged prior to opening to bring the contents to the bottom. Please reconstitute protein in deionized sterile water to a concentration of 0.1-1.0 mg/mL.We recommend to add 5-50% of glycerol (final

 Tel: 1-631-559-9269 1-516-512-3133

 Email: [info@creative-biomart.com](mailto:info@creative-biomart.com)  Fax: 1-631-938-8127

 45-1 Ramsey Road, Shirley, NY 11967, USA

concentration) and aliquot for long-term storage at -20°C/-80°C.

**AA Sequence**

```
MTSSCCVTNNLQASLKSCP RPASVCSSGVNCRPELCLGYVCQPMACLP SVCLPTTF
RPASCLSKTYLSSSCQAASGISGSMGPGSWYSEGAFNGNEKETMQFLNDR LASYL
TRVRQLEQENAELESRIQEASHSQVLTMTDPDYQSHFRTIEELQQKILCTKAENARMV
VNIDNAKLAADD FRAKYEAELAMRQLVEADINGLRRILDDLT LCKADLEAQVESLKEE
LMCLKKNHEEEV GSLRCQLGDRLNIEVDAAPPVDL TRVLEEMRCQYEAMVEANRRD
VEEWFNMQMEELNQQVATSSEQLQNYQSDIIDLRRTVNTLEIELQAQHSLRDSLENT
LTESEARYSSQLAQMCMITNVEAQLAEIRADLERQNQEYQVLLDVRARLEGEINTY
RSLLENEDCKLPCNPCSTPSCCTTCVPSPCVPR TVCVPRTVGMPCSPCPQGRY
```

## GENE INFORMATION

**Gene Name** [KRT32 keratin 32 \[ Homo sapiens \]](#)

**Official Symbol** [KRT32](#)

**Synonyms** [KRT32](#); keratin 32; keratin, hair, acidic, 2 , [KRTHA2](#); keratin, type I cuticular Ha2; Ha 2; hard keratin type I; [K32](#); keratin-32; hard keratin, type I, 2; hair keratin, type I Ha2; keratin, hair, acidic, 2; type I cuticular hair keratin; [HA2](#); [HKA2](#); [hHa2](#); [KRTHA2](#);

**Gene ID** [3882](#)

**mRNA Refseq** [NM\\_002278](#)

**Protein Refseq** [NP\\_002269](#)

**MIM** [602760](#)

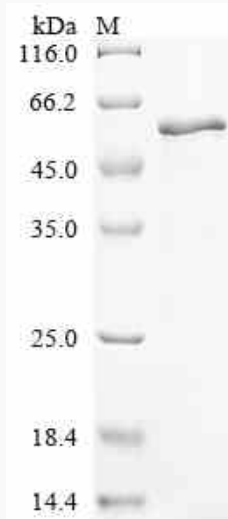
**UniProt ID** [Q14532](#)

 Tel: 1-631-559-9269 1-516-512-3133

 Email: [info@creative-biomart.com](mailto:info@creative-biomart.com)  Fax: 1-631-938-8127

 45-1 Ramsey Road, Shirley, NY 11967, USA

**SDS-PAGE**



 Tel: 1-631-559-9269 1-516-512-3133

 Email: [info@creative-biomart.com](mailto:info@creative-biomart.com)  Fax: 1-631-938-8127

 45-1 Ramsey Road, Shirley, NY 11967, USA