

## Recombinant Human KRT32 Protein, GST-tagged

**Cat. No.** KRT32-4854H    **Lot. No.** (See product label)

### SPECIFICATION

<b>Product Overview</b>	Human KRT32 full-length ORF ( AAI48741.1, 1 a.a. - 448 a.a.) recombinant protein with GST-tag at N-terminal.
<b>Species</b>	Human
<b>Source</b>	Wheat Germ
<b>Description</b>	The protein encoded by this gene is a member of the keratin gene family. As a type I hair keratin, it is an acidic protein which heterodimerizes with type II keratins to form hair and nails. The type I hair keratins are clustered in a region of chromosome 17q12-q21 and have the same direction of transcription. [provided by RefSeq]
<b>Molecular Mass</b>	76.23 kDa
<b>AA Sequence</b>	<p>MTSSCCVTNNLQASLKSCRPRPASVCSSGVNCRPELCLGYVCQPMACLPVCLPTTF  RPASCLSKTYLSSSCQAASGISGSMGPGSWYSEGAFNGNEKETMQFLNDRLASYL  TRVRQLEQENAELESRIQEASHSQVLTMTDPDYQSHFRTIEELQQKILCTKAENARMV  VNIDNAKLAADDFRAKYEAEELAMRQLVEADINGLRRILDDLTLCKADLEAQVESLKEE  LMCLKKNHEEEVGLSLRCQLGDRLNIEVDAAPPVDLTRVLEEMRCQYEAMVEANRRD  VEEWFNMQMEELNQQVATSSEQLQNYQSDIIDLRRTVNTLEIELQAQHSLRDSLENT  LTESEARYSSQLAQMQCMITNVEAQLAEIRADLERQNQEYQVLLDVRARLEGEINTY  RSLLENEDCKLPCNPCSTPSCCTTCVPSPCVPRTVCVPRTVGMPCSPCPQGRY</p>
<b>Applications</b>	Enzyme-linked Immunoabsorbent Assay Western Blot (Recombinant protein)

 Tel: 1-631-559-9269    1-516-512-3133

 Email: [info@creative-biomart.com](mailto:info@creative-biomart.com)     Fax: 1-631-938-8127

 45-1 Ramsey Road, Shirley, NY 11967, USA

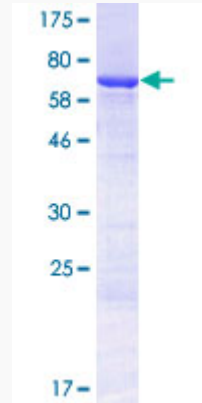
	Antibody Production Protein Array
<b>Notes</b>	Best use within three months from the date of receipt of this protein.
<b>Storage</b>	Store at -80 centigrade. Aliquot to avoid repeated freezing and thawing.
<b>Storage Buffer</b>	50 mM Tris-HCl, 10 mM reduced Glutathione, pH=8.0 in the elution buffer.
<b>GENE INFORMATION</b>	
<b>Gene Name</b>	KRT32 keratin 32 [ Homo sapiens ]
<b>Official Symbol</b>	KRT32
<b>Synonyms</b>	KRT32; keratin 32; keratin, hair, acidic, 2 , KRTHA2; keratin, type I cuticular Ha2; Ha 2; hard keratin type I; K32; keratin-32; hard keratin, type I, 2; hair keratin, type I Ha2; keratin, hair, acidic, 2; type I cuticular hair keratin; HA2; HKA2; hHa2; KRTHA2;
<b>Gene ID</b>	3882
<b>mRNA Refseq</b>	NM_002278
<b>Protein Refseq</b>	NP_002269
<b>MIM</b>	602760
<b>UniProt ID</b>	Q14532

 Tel: 1-631-559-9269 1-516-512-3133

 Email: [info@creative-biomart.com](mailto:info@creative-biomart.com)  Fax: 1-631-938-8127

 45-1 Ramsey Road, Shirley, NY 11967, USA

**Quality Control  
Testing**



12.5% SDS-PAGE Stained with Coomassie Blue

 Tel: 1-631-559-9269 1-516-512-3133

 Email: [info@creative-biomart.com](mailto:info@creative-biomart.com)  Fax: 1-631-938-8127

 45-1 Ramsey Road, Shirley, NY 11967, USA