

Recombinant Human KRT35 Protein (1-455 aa), His-SUMO-tagged

Cat. No. KRT35-1858H **Lot. No.** (See product label)

SPECIFICATION

Product Overview Recombinant Human KRT35 Protein (1-455 aa) is produced by Yeast expression system. This protein is fused with a 6xHis-SUMO tag at the N-terminal. Research Area: Signal Transduction. Protein Description: Full Length.

Species Human

Source Yeast

ProteinLength 1-455 aa

Form Tris-based buffer,50% glycerol

Molecular Mass 66.4 kDa

AA Sequence

```

MASKCLKAGFSSGSLKSPGGASGGSTRVSAMYSSSSCKLPSLSPVARSFSACSVGL
GRSSYRATSCLPALCLPAGGFATSYSGGGWFGEGILTGNEKETMQSLNDRLAGY
LEKVRQLEQENASLESRIREWCEQQVPYMCPDYQSYFRTIEELQKKTLCskaENAR
LVVEIDNAKLAADDFRtkYETEVSRLRQLVESDINGLRRLDDTLCKSDLEAQVESLKE
ELLCLKKNHEEEVNSLRCQLGDRLNVEVDAAPPVDLNRVLEEMRCQYETLVENRR
DAEDWLDTQSEELNQQVVSSSEQLQSCQAEIIELRRTVNALEIELQAQHSMRDALES
TLAETEARYSSQLAQMQCMITNVEAQLAEIRADLERQNQEYQVLLDVRARLECEINT
YRGLLESEDSKLPcNpCAPDYSPSKSCLPCLPAASCgPSAARTncSPRPICVPCPG
GRF
    
```

 Tel: 1-631-559-9269 1-516-512-3133

 Email: info@creative-biomart.com  Fax: 1-631-938-8127

 45-1 Ramsey Road, Shirley, NY 11967, USA

Purity	> 90% as determined by SDS-PAGE.
Notes	Repeated freezing and thawing is not recommended. Store working aliquots at 4 centigrade for up to one week.
Storage	The shelf life is related to many factors, storage state, buffer ingredients, storage temperature and the stability of the protein itself. Generally, the shelf life of liquid form is 6 months at -20 centigrade/-80 centigrade. The shelf life of lyophilized form is 12 months at -20 centigrade/-80 centigrade.
Concentration	A hardcopy of COA with reconstitution instruction is sent along with the products.

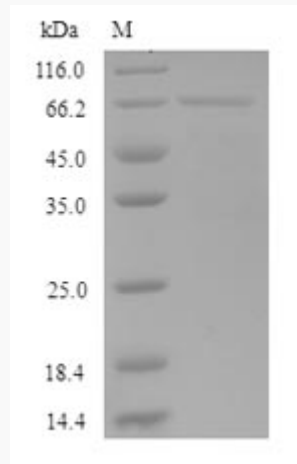
GENE INFORMATION

Gene Name	KRT35 keratin 35 [Homo sapiens]
Official Symbol	KRT35
Synonyms	KRT35; keratin 35; Ha 5; K35; keratin-35; HA5; Ha-5; hHa5; KRTHA5;
Gene ID	3886
mRNA Refseq	NM_002280
Protein Refseq	NP_002271
MIM	602764
UniProt ID	Q92764

 Tel: 1-631-559-9269 1-516-512-3133

 Email: info@creative-biomart.com  Fax: 1-631-938-8127

 45-1 Ramsey Road, Shirley, NY 11967, USA



(Tris-Glycine gel) Discontinuous SDS-PAGE (reduced) with 5% enrichment gel and 15% separation gel.

Tel: 1-631-559-9269 1-516-512-3133

Email: info@creative-biomart.com Fax: 1-631-938-8127

45-1 Ramsey Road, Shirley, NY 11967, USA