

Recombinant Human KRT35 Protein, GST-tagged

Cat. No. KRT35-4851H **Lot. No.** (See product label)

SPECIFICATION

Product Overview	Human KRT35 full-length ORF (AAI46509.1, 1 a.a. - 455 a.a.) recombinant protein with GST-tag at N-terminal.
Species	Human
Source	Wheat Germ
Description	The protein encoded by this gene is a member of the keratin gene family. This type I hair keratin is an acidic protein which heterodimerizes with type II keratins to form hair and nails. The type I hair keratins are clustered in a region of chromosome 17q12-q21 and have the same direction of transcription. [provided by RefSeq]
Molecular Mass	77 kDa
AA Sequence	MASKCLKAGFSSGSLKSPGGASGGSTRVSAMYSSSSCKLPSLSPVARSFSACSVGL GRSSYRATSCLPALCLPAGGFATSYSGGGWFGEGILTGNEKETMQSLNDRLAGY LEKVRQLEQENASLESRIREWCEQQVPYMCPTYQSYFRTIEELQKKTLC SKAENAR LVVEIDNAKLAADDFRTKYETEVS LRQLVESDINGLRRILDDLTLCKSDLEAQVESLKE ELLCLKKNHEEEVNSLRCLGDRLNVEVDAAPPVDLNRVLEEMRCQYETLVENRR DAEDWLDTQSEELNQQVVSSSEQLQSCQAEIILRRTVNALEIELQAQHS MRDALES TLAETEARYSSQLAQMQCMITNVEAQLAEIRADLERQNQEYQVLLDVRARLECEINT YRGLLESEDSKLP CNPCAPDYSPSKSCLPCLPAASCGPSAARTNCSPRPICVPCPG GRF
Applications	Enzyme-linked Immunoabsorbent Assay

 Tel: 1-631-559-9269 1-516-512-3133

 Email: info@creative-biomart.com  Fax: 1-631-938-8127

 45-1 Ramsey Road, Shirley, NY 11967, USA

Western Blot (Recombinant protein)
 Antibody Production
 Protein Array

Notes Best use within three months from the date of receipt of this protein.

Storage Store at -80 centigrade. Aliquot to avoid repeated freezing and thawing.

Storage Buffer 50 mM Tris-HCl, 10 mM reduced Glutathione, pH=8.0 in the elution buffer.

GENE INFORMATION

Gene Name [KRT35 keratin 35 \[Homo sapiens \]](#)

Official Symbol [KRT35](#)

Synonyms KRT35; keratin 35; keratin, hair, acidic, 5 , KRTHA5; keratin, type I cuticular Ha5; Ha 5; hard keratin type I 5; K35; keratin-35; hard keratin, type I, 5; hair keratin, type I Ha5; keratin, hair, acidic, 5; HHa5 hair keratin type I intermediate filament; HA5; Ha-5; hHa5; KRTHA5;

Gene ID [3886](#)

mRNA Refseq [NM_002280](#)

Protein Refseq [NP_002271](#)

MIM [602764](#)

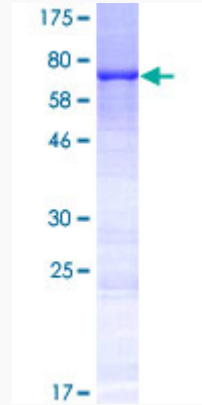
UniProt ID [Q92764](#)

 Tel: 1-631-559-9269 1-516-512-3133

 Email: info@creative-biomart.com  Fax: 1-631-938-8127

 45-1 Ramsey Road, Shirley, NY 11967, USA

**Quality Control
Testing**



12.5% SDS-PAGE Stained with Coomassie Blue

 Tel: 1-631-559-9269 1-516-512-3133

 Email: info@creative-biomart.com  Fax: 1-631-938-8127

 45-1 Ramsey Road, Shirley, NY 11967, USA