

## Recombinant Human KRT36 Protein, GST-tagged

**Cat. No.** KRT36-4850H    **Lot. No.** (See product label)

### SPECIFICATION

|                         |  |
|-------------------------|--|
| <b>Product Overview</b> | Human KRT36 full-length ORF ( AAH43581.1, 1 a.a. - 417 a.a.) recombinant protein with GST-tag at N-terminal.   |
| <b>Species</b>          | Human  |
| <b>Source</b>           | Wheat Germ   |
| <b>Description</b>      | The protein encoded by this gene is a member of the keratin gene family. This type I hair keratin is an acidic protein which heterodimerizes with type II keratins to form hair and nails. The type I hair keratins are clustered in a region of chromosome 17q12-q21 and have the same direction of transcription. [provided by RefSeq]   |
| <b>Molecular Mass</b>   | 73.9 kDa   |
| <b>AA Sequence</b>      | MLRSGLSGLGSCLPGSYLSSECHTSGFVGGWFCEGSFNGSEKETMQFLNDRLA<br>NYLEKVRQLERENAELESRIQEWYEFQIPYICPDYQSYFKTIEDFQQKILLTKSENARL<br>VLQIDNAKLAADDFRTKYETELSLRQLVEADINGLRRILDELTLCKADLEAQVESLKEE<br>LMCLKKNHEEEVSVLRCQLGDRLNVEVDAAPPVDLNKILEDMRCQYEALVENNRRD<br>VEAWFNTQTEELNQVVSSEQLQCCQTEIIELRRTVNALEIELQAQHSMRNSLEST<br>LAETEARYSSQLAQMQLISNVEAQLSEIRCDLERQNQEYQVLLDVKARLEGEIATY<br>RHLLEGEDCKLPPQPCATAACKPVIRVPSVPPVPCVPSVPCTPAPQVGTQIRTITEIR<br>DGKVISSREHVQSRPL |
| <b>Applications</b>     | Enzyme-linked Immunoabsorbent Assay<br>Western Blot (Recombinant protein)  |

 Tel: 1-631-559-9269    1-516-512-3133

 Email: [info@creative-biomart.com](mailto:info@creative-biomart.com)     Fax: 1-631-938-8127

 45-1 Ramsey Road, Shirley, NY 11967, USA

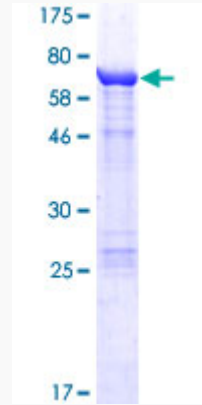
|                         |  |
|-------------------------|--|
|                         | Antibody Production<br>Protein Array   |
| <b>Notes</b>            | Best use within three months from the date of receipt of this protein.   |
| <b>Storage</b>          | Store at -80 centigrade. Aliquot to avoid repeated freezing and thawing.   |
| <b>Storage Buffer</b>   | 50 mM Tris-HCl, 10 mM reduced Glutathione, pH=8.0 in the elution buffer.   |
| <b>GENE INFORMATION</b> |  |
| <b>Gene Name</b>        | KRT36 keratin 36 [ Homo sapiens ]  |
| <b>Official Symbol</b>  | KRT36  |
| <b>Synonyms</b>         | KRT36; keratin 36; keratin, hair, acidic, 6 , KRTHA6; keratin, type I cuticular Ha6; K36; keratin-36; hair keratin, type I Ha6; keratin, hair, acidic, 6; HA6; hHa6; KRTHA6; |
| <b>Gene ID</b>          | 8689   |
| <b>mRNA Refseq</b>      | NM_003771  |
| <b>Protein Refseq</b>   | NP_003762  |
| <b>MIM</b>              | 604540   |
| <b>UniProt ID</b>       | O76013   |

 Tel: 1-631-559-9269 1-516-512-3133

 Email: [info@creative-biomart.com](mailto:info@creative-biomart.com)  Fax: 1-631-938-8127

 45-1 Ramsey Road, Shirley, NY 11967, USA

**Quality Control  
Testing**



12.5% SDS-PAGE Stained with Coomassie Blue

 Tel: 1-631-559-9269 1-516-512-3133

 Email: [info@creative-biomart.com](mailto:info@creative-biomart.com)  Fax: 1-631-938-8127

 45-1 Ramsey Road, Shirley, NY 11967, USA