

Recombinant Human KRT4 Protein (1-534 aa), His-tagged

Cat. No. KRT4-1438H **Lot. No.** (See product label)

SPECIFICATION

Product Overview Recombinant Human KRT4 Protein (1-534 aa) is produced by Yeast expression system. This protein is fused with a 6xHis tag at the N-terminal. Research Area: Signal Transduction. Protein Description: Full Length.

Species Human

Source Yeast

ProteinLength 1-534 aa

Form Tris-based buffer,50% glycerol

Molecular Mass 59.3 kDa

AA Sequence

```

MIARQQCVRGGPRGFSCGSAIVGGGKRGAFSSVSMSSGGAGRCSSGGFGSRSLYN
LRGNKSISMSVAGSRQGACFGGAGGGFGTGGFGAGGGFGAGFGTGGFGGGGFGGSFS
GKGGPGFPVCPAGGIQEVTINQSLTPLHVEIDPEIQKVRTEEREQIKLLNNKFASFID
KVQFLEQQNKVLETKWNLLQQQTTTTSSKNLEPLFETYLSVLRKQLDTLGNDKGRL
QSELKTMQDSVEDFKTKYEEEINKRTAAENDFVVLKKDVEDAAYLNKVELEAKVDSLN
DEINFLKVLYDAELSQQMQTHVSDTSVVLSDMNNRNLDLDSIAEVRAQYEEIAQRSKA
EAEALYQTKVQQLQISVDQHGDNLKNTKSEIAELNRMQRLRAEIEIKKQCQTLQVS
VADAEQRGENALKDAHSKRVELEAALQQAKEELARMLREYQELMSVKLALDIEIATY
RKLLEGEEYRMSGECQSAVSISVSVGSTSTGGISGGLGSGSGFGLSSGFGSGSGS
GFGFGGSVSGSSSSKIISTTTLNKRR
    
```

 Tel: 1-631-559-9269 1-516-512-3133

 Email: info@creative-biomart.com  Fax: 1-631-938-8127

 45-1 Ramsey Road, Shirley, NY 11967, USA

Purity	> 90% as determined by SDS-PAGE.
Notes	Repeated freezing and thawing is not recommended. Store working aliquots at 4 centigrade for up to one week.
Storage	The shelf life is related to many factors, storage state, buffer ingredients, storage temperature and the stability of the protein itself. Generally, the shelf life of liquid form is 6 months at -20 centigrade/-80 centigrade. The shelf life of lyophilized form is 12 months at -20 centigrade/-80 centigrade.
Concentration	A hardcopy of COA with reconstitution instruction is sent along with the products.

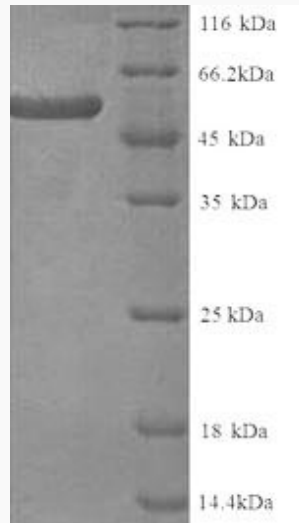
GENE INFORMATION

Gene Name	KRT4 keratin 4 [Homo sapiens]
Official Symbol	KRT4
Synonyms	KRT4; keratin 4; CYK4; CK4; cytokeratin 4; K4; keratin; CK-4; FLJ31692;
Gene ID	3851
mRNA Refseq	NM_002272
Protein Refseq	NP_002263
MIM	123940
UniProt ID	P19013

 Tel: 1-631-559-9269 1-516-512-3133

 Email: info@creative-biomart.com  Fax: 1-631-938-8127

 45-1 Ramsey Road, Shirley, NY 11967, USA



(Tris-Glycine gel) Discontinuous SDS-PAGE (reduced) with 5% enrichment gel and 15% separation gel.

 Tel: 1-631-559-9269 1-516-512-3133

 Email: info@creative-biomart.com  Fax: 1-631-938-8127

 45-1 Ramsey Road, Shirley, NY 11967, USA