

# Recombinant Human KRT4 Protein (1-534 aa), His-SUMO-tagged

**Cat. No.** KRT4-613H    **Lot. No.** (See product label)

## SPECIFICATION

**Product Overview**      Recombinant Human KRT4 Protein (1-534 aa) is produced by E. coli expression system. This protein is fused with a 6xHis-SUMO tag at the N-terminal. Research Area: Signal Transduction. Protein Description: Full Length.

**Species**      Human

**Source**      E.coli

**ProteinLength**      1-534 aa

**Form**      Tris-based buffer, 50% glycerol

**Molecular Mass**      73.3 kDa

**AA Sequence**

```

MIARQQCVRGGPRGFSCGSAIVGGGKRGAFSSVSMSSGGAGRCSSGGFGSRSLYN
LRGNKSISMSVAGSRQGACFGGAGGFGTGGFGAGGFGAGFGTGGFGGGGFGGGSFS
GKGGPGFPVCPAGGIQEVTINQSLTPLHVEIDPEIQKVRTEEREQIKLLNNKFASFID
KVQFLEQQNKVLETKWNLLQQQTSSKNLEPLFETYLSVLRKQLDTLGNDKGRL
QSELKTMQDSVEDFKTKYEEEINKRTAAENDFVVLKKDVAAYLNKVELEAKVDSLN
DEINFLKVLYDAELSQMQTHVSDTSVVLSDMNNRNLDLDSIAEVRQAQYEEIAQRSKA
EAEALYQTKVQQLQISVDQHGDNLKNTKSEIAELNRMIRLRAEIEINIKKQCQTLQVS
VADAEQRGENALKDAHSKRVELEAALQQAKEELARMLREYQELMSVKLALDIEIATY
RKLLEGEEYRMSGECQSAVSISVSGSTSTGGISGGLGSGSGFGLSSGFGSGSGS
GFGFGGSSVSGSSSSKIISTTTLNKRR
    
```

 Tel: 1-631-559-9269    1-516-512-3133

 Email: [info@creative-biomart.com](mailto:info@creative-biomart.com)     Fax: 1-631-938-8127

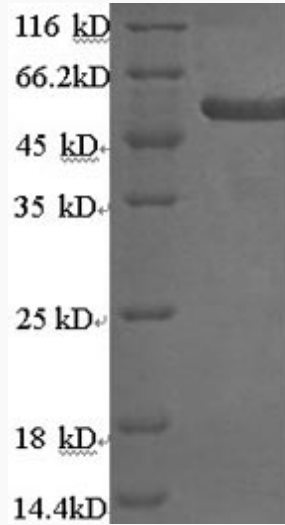
 45-1 Ramsey Road, Shirley, NY 11967, USA

<b>Purity</b>	> 90% as determined by SDS-PAGE.
<b>Notes</b>	Repeated freezing and thawing is not recommended. Store working aliquots at 4 centigrade for up to one week.
<b>Storage</b>	The shelf life is related to many factors, storage state, buffer ingredients, storage temperature and the stability of the protein itself. Generally, the shelf life of liquid form is 6 months at -20 centigrade/-80 centigrade. The shelf life of lyophilized form is 12 months at -20 centigrade/-80 centigrade.
<b>Concentration</b>	A hardcopy of COA with concentration instruction is sent along with the products.
<b>GENE INFORMATION</b>	
<b>Gene Name</b>	KRT4 keratin 4 [ Homo sapiens ]
<b>Official Symbol</b>	KRT4
<b>Synonyms</b>	KRT4; keratin 4; CK4; cytokeratin 4; K4; keratin; CK-4; FLJ31692;
<b>Gene ID</b>	3851
<b>mRNA Refseq</b>	NM_002272
<b>Protein Refseq</b>	NP_002263
<b>MIM</b>	123940
<b>UniProt ID</b>	P19013

 Tel: 1-631-559-9269 1-516-512-3133

 Email: [info@creative-biomart.com](mailto:info@creative-biomart.com)  Fax: 1-631-938-8127

 45-1 Ramsey Road, Shirley, NY 11967, USA



(Tris-Glycine gel) Discontinuous SDS-PAGE (reduced) with 5% enrichment gel and 15% separation gel.

 Tel: 1-631-559-9269 1-516-512-3133

 Email: [info@creative-biomart.com](mailto:info@creative-biomart.com)  Fax: 1-631-938-8127

 45-1 Ramsey Road, Shirley, NY 11967, USA