

Recombinant Human KRT5 Protein (Thr166-Leu474), N-His tagged

Cat. No. KRT5-4383H Lot. No. (See product label)

SPECIFICATION

Product Overview	Recombinant human KRT5 (Thr166-Leu474) fused with the N-His tag was expressed in E. coli.
Species	Human
Source	E.coli
ProteinLength	Thr166-Leu474
Form	Lyophilized powder/frozen liquid
Molecular Mass	38.62 kDa
Purity	>90% as determined by SDS-PAGE.
Notes	For research use only.
Storage	Use a manual defrost freezer and avoid repeated freeze thaw cycles. Store at 2 to 8 centigrade for one week. Store at -20 to -80 centigrade for twelve months from the date of receipt.
Storage Buffer	0.01M PBS, pH 7.4, 0.02% NLS
Reconstitution	Reconstitute in sterile water for a stock solution.

 Tel: 1-631-559-9269 1-516-512-3133

 Email: info@creative-biomart.com  Fax: 1-631-938-8127

 45-1 Ramsey Road, Shirley, NY 11967, USA

Shipping They are shipped out with dry ice/blue ice unless customers require otherwise.

GENE INFORMATION

Gene Name [KRT5 keratin 5 \[Homo sapiens \(human\) \]](#)

Official Symbol [KRT5](#)

Synonyms

KRT5; keratin 5; EBS2, epidermolysis bullosa simplex 2 Dowling Meara/Kobner/Weber Cockayne types, keratin 5 (epidermolysis bullosa simplex, Dowling Meara/Kobner/Weber Cockayne types); keratin, type II cytoskeletal 5; KRT5A; CK-5; cytokeratin-5; 58 kda cytokeratin; type-II keratin Kb5; epidermolysis bullosa simplex 2 Dowling-Meara/Kobner/Weber-Cockayne types; keratin 5 (epidermolysis bullosa simplex, Dowling-Meara/Kobner/Weber-Cockayne types); K5; CK5; DDD; EBS2;

Gene ID [3852](#)

mRNA Refseq [NM_000424](#)

Protein Refseq [NP_000415](#)

MIM [148040](#)

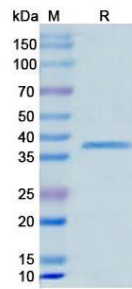
UniProt ID [P13647](#)

 Tel: 1-631-559-9269 1-516-512-3133

 Email: info@creative-biomart.com  Fax: 1-631-938-8127

 45-1 Ramsey Road, Shirley, NY 11967, USA

SDS-PAGE



 Tel: 1-631-559-9269 1-516-512-3133

 Email: info@creative-biomart.com  Fax: 1-631-938-8127

 45-1 Ramsey Road, Shirley, NY 11967, USA