

Recombinant Human KRT6A protein, GST-tagged

Cat. No. KRT6A-016H Lot. No. (See product label)

SPECIFICATION

Product Overview Recombinant Human KRT6A full-length ORF (AAH08807.1, 1 a.a. - 564 a.a.) protein was expressed in wheat Germ with GST-tag at N-terminal.

Species Human

Source Wheat Germ

Description The protein encoded by this gene is a member of the keratin gene family. The type II cytokeratins consist of basic or neutral proteins which are arranged in pairs of heterotypic keratin chains coexpressed during differentiation of simple and stratified epithelial tissues. As many as six of this type II cytokeratin (KRT6) have been identified; the multiplicity of the genes is attributed to successive gene duplication events. The genes are expressed with family members KRT16 and/or KRT17 in the filiform papillae of the tongue, the stratified epithelial lining of oral mucosa and esophagus, the outer root sheath of hair follicles, and the glandular epithelia. This KRT6 gene in particular encodes the most abundant isoform. Mutations in these genes have been associated with pachyonychia congenita. In addition, peptides from the C-terminal region of the protein have antimicrobial activity against bacterial pathogens. The type II cytokeratins are clustered in a region of chromosome 12q12-q13.

Form 50 mM Tris-HCl, 10 mM reduced Glutathione, pH=8.0 in the elution buffer.

Molecular Mass 87.78 kDa

 Tel: 1-631-559-9269 1-516-512-3133

 Email: info@creative-biomart.com  Fax: 1-631-938-8127

 45-1 Ramsey Road, Shirley, NY 11967, USA

AA Sequence

MASTSTTIRSHSSSRGFSANSARLPGVSRSGFSSVSVSRSRGSGGLGGACGGAG
 FGSRSLYGLGGSKRISIGGGSCAISGGYGSRAGGSYGFGGAGSGFGFGGGAGIGF
 GLGGGAGLAGGFGGPGFPVCPGGIQEVTVNQSLLTPLNLQIDPTIQRVRAEEREQI
 KTLNNKFASFIDKVRFLEQQNKVLETKWTLLEQGTCTVRQNLEPLFEQYINNLRQ
 LDSIVGERGRLDSELRGMQDLVEDFKNKYEDEINKRTAAENEFVTLKKDVDAAYMN
 KVELQAKADTLTDEINFLRALYDAELSQQMTHISDTSVVLSDMNNRNLDLDSIIAEVK
 AQYEEIAQRSRAEAESWYQTKYEELQVTAGRHGDDLNRNTKQEIAEINRMIQRLRSEI
 DHVKKQCANLQAAIADAEQRGEMALKDAKNKLEGLDALQKAKQDLARLLKEYQEL
 MNVKLALDVEIATYRKLLEGEECRLNGEGVGVQVNISVVQSTVSSGYGGASGVGSGL
 GLGGGSSYSYGSGLGVGGGFSSSSGRAIGGGLSSVGGGSSTIKYTTTSSSSRKS
 YK
 H

Storage


Store at -80 centigrade. Aliquot to avoid repeated freezing and thawing.

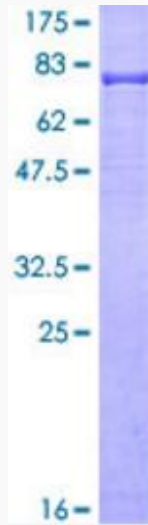
GENE INFORMATION

Gene Name	KRT6A keratin 6A [Homo sapiens]
Official Symbol	KRT6A
Synonyms	CK-6C; CK-6E; CK6A; CK6C; CK6D; K6A; K6C; K6D; KRT6C; KRT6D; PC3
Gene ID	3853
mRNA Refseq	NM_005554.3
Protein Refseq	AAH08807.1
MIM	148041
UniProt ID	P02538

 Tel: 1-631-559-9269 1-516-512-3133

 Email: info@creative-biomart.com  Fax: 1-631-938-8127

 45-1 Ramsey Road, Shirley, NY 11967, USA



 Tel: 1-631-559-9269 1-516-512-3133

 Email: info@creative-biomart.com  Fax: 1-631-938-8127

 45-1 Ramsey Road, Shirley, NY 11967, USA