

Recombinant Human KRT6A Protein (Glu163-Leu468), N-His tagged

Cat. No. KRT6A-4385H Lot. No. (See product label)

SPECIFICATION

Product Overview	Recombinant human KRT6A (Glu163-Leu468) fused with the N-His tag was expressed in E. coli.
Species	Human
Source	E.coli
ProteinLength	Glu163-Leu468
Form	Lyophilized powder/frozen liquid
Molecular Mass	37.91 kDa
Purity	>90% as determined by SDS-PAGE.
Notes	For research use only.
Storage	Use a manual defrost freezer and avoid repeated freeze thaw cycles. Store at 2 to 8 centigrade for one week. Store at -20 to -80 centigrade for twelve months from the date of receipt.
Storage Buffer	0.01M PBS, pH 7.4, 0.02% NLS
Reconstitution	Reconstitute in sterile water for a stock solution.

 Tel: 1-631-559-9269 1-516-512-3133

 Email: info@creative-biomart.com  Fax: 1-631-938-8127

 45-1 Ramsey Road, Shirley, NY 11967, USA

Shipping They are shipped out with dry ice/blue ice unless customers require otherwise.

GENE INFORMATION

Gene Name [KRT6A keratin 6A \[Homo sapiens \(human\) \]](#)

Official Symbol [KRT6A](#)

Synonyms KRT6A; keratin 6A; keratin 6C, keratin 6D, KRT6C, KRT6D; keratin, type II cytoskeletal 6A; CK6C; CK6D; K6C; K6D; cytokeratin 6A; cytokeratin 6C; cytokeratin 6D; type-II keratin Kb6; keratin, epidermal type II, K6A; K6A; CK6A; KRT6C; KRT6D;

Gene ID [3853](#)

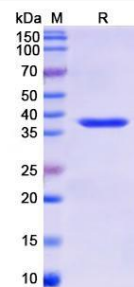
mRNA Refseq [NM_005554](#)

Protein Refseq [NP_005545](#)

MIM [148041](#)

UniProt ID [P02538](#)

SDS-PAGE



 Tel: 1-631-559-9269 1-516-512-3133

 Email: info@creative-biomart.com  Fax: 1-631-938-8127

 45-1 Ramsey Road, Shirley, NY 11967, USA