

## Recombinant Human KRT6B Protein, GST-tagged

Cat. No. KRT6B-4846H Lot. No. (See product label)

### SPECIFICATION

<b>Product Overview</b>	Human KRT6B full-length ORF ( AAH34535, 1 a.a. - 564 a.a.) recombinant protein with GST-tag at N-terminal.
<b>Species</b>	Human
<b>Source</b>	Wheat Germ
<b>Description</b>	<p>The protein encoded by this gene is a member of the keratin gene family. The type II cytokeratins consist of basic or neutral proteins which are arranged in pairs of heterotypic keratin chains coexpressed during differentiation of simple and stratified epithelial tissues. As many as six of this type II cytokeratin (KRT6) have been identified; the multiplicity of the genes is attributed to successive gene duplication events. The genes are expressed with family members KRT16 and/or KRT17 in the filiform papillae of the tongue, the stratified epithelial lining of oral mucosa and esophagus, the outer root sheath of hair follicles, and the glandular epithelia. Mutations in these genes have been associated with pachyonychia congenita. The type II cytokeratins are clustered in a region of chromosome 12q12-q13. [provided by RefSeq]</p>
<b>Molecular Mass</b>	87.78 kDa
<b>AA Sequence</b>	<p>MASTSTTIRSHSSSRGFSANSARLPGVSRSGFSSISVSRSRGSGGLGGACGGAGF            GSRSLYGLGGSKRISIGGGSCAISGGYGSRAGGSYGFGGAGSGFGFGGGAGIGFG            LGGGAGLAGGFGGPGFPVCPGGIQEVTVNQSLTPLNLQIDPAIQRVRAEEREQIK</p>

 Tel: 1-631-559-9269 1-516-512-3133

 Email: [info@creative-biomart.com](mailto:info@creative-biomart.com)  Fax: 1-631-938-8127

 45-1 Ramsey Road, Shirley, NY 11967, USA



TLNNKFASFIDKVRFLFLEQQNKVLDTKWTLLQEQQGTKTVRQNLEPLFEQYINNLRRL  
 DNIVGERGRLDSELRNMQDLVEDLKNKYEDEINKRRTAAENEFVTLKKDVAAYMKN  
 VELQAKADTLTDEINFLRALYDAELSQMQTHISDTSVVLSDMNNRNLDLDSIIAEVKA  
 QYEEIAQRSRAEAEESWYQTKYEELQITAGRHGDDLNRNTKQEIAEINRMIQRLRSEIDH  
 VKKQCANLQAAIADAEQRGEMALKDAKNKLEGLDALQKAKQDLARLLKEYQELMN  
 VKLALDVEIATYRKLEEGEECLNGEGVGVQVNISVVQSTVSSGYGGASGVGSGGLGL  
 GGGSSYSYGSLGVGGGFSSSSGRATGGGLSSVGGGSSTIKYTTTTSSSSRKSYPKH

**Applications**

Enzyme-linked Immunoabsorbent Assay  
 Western Blot (Recombinant protein)  
 Antibody Production  
 Protein Array

**Notes**

Best use within three months from the date of receipt of this protein.

**Storage**

Store at -80 centigrade. Aliquot to avoid repeated freezing and thawing.

**Storage Buffer**

50 mM Tris-HCl, 10 mM reduced Glutathione, pH=8.0 in the elution buffer.

**GENE INFORMATION**

**Gene Name**

KRT6B keratin 6B [ Homo sapiens ]

**Official Symbol**

KRT6B

**Synonyms**

KRT6B; keratin 6B; keratin like 1 (a type II keratin sequence) , KRTL1; keratin, type II cytoskeletal 6B; keratin-6B; cytokeratin 6B; cytokeratin-6B; type-II keratin Kb10; keratin, epidermal, type II, K6B; keratin-like 1 (a type II keratin sequence); K6B; PC2; CK6B; CK-6B; KRTL1;

**Gene ID**

3854

Tel: 1-631-559-9269 1-516-512-3133

Email: [info@creative-biomart.com](mailto:info@creative-biomart.com) Fax: 1-631-938-8127

45-1 Ramsey Road, Shirley, NY 11967, USA

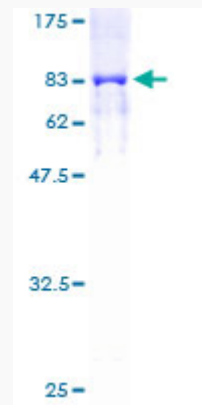
mRNA Refseq [NM\\_005555](#)

Protein Refseq [NP\\_005546](#)

MIM [148042](#)

UniProt ID [P04259](#)

**Quality Control  
Testing**



12.5% SDS-PAGE Stained with Coomassie Blue

 Tel: 1-631-559-9269 1-516-512-3133

 Email: [info@creative-biomart.com](mailto:info@creative-biomart.com)  Fax: 1-631-938-8127

 45-1 Ramsey Road, Shirley, NY 11967, USA