

Recombinant Human KRT6C Protein (Glu163-Gly482), N-His tagged

Cat. No. KRT6C-4214H Lot. No. (See product label)

SPECIFICATION

Product Overview	Recombinant human KRT6C (Glu163-Gly482) fused with the N-His tag was expressed in E. coli.
Species	Human
Source	E.coli
ProteinLength	Glu163-Gly482
Form	Lyophilized powder/frozen liquid
Molecular Mass	39.34 kDa
Purity	>90% as determined by SDS-PAGE.
Notes	For research use only.
Storage	Use a manual defrost freezer and avoid repeated freeze thaw cycles. Store at 2 to 8 centigrade for one week. Store at -20 to -80 centigrade for twelve months from the date of receipt.
Storage Buffer	0.01M PBS, pH 7.4, 0.02% NLS
Reconstitution	Reconstitute in sterile water for a stock solution.

 Tel: 1-631-559-9269 1-516-512-3133

 Email: info@creative-biomart.com  Fax: 1-631-938-8127

 45-1 Ramsey Road, Shirley, NY 11967, USA

Shipping They are shipped out with dry ice/blue ice unless customers require otherwise.

GENE INFORMATION

Gene Name KRT6C keratin 6C [Homo sapiens (human)]

Official Symbol KRT6C

Synonyms KRT6C; keratin 6C; keratin 6E, KRT6E; keratin, type II cytoskeletal 6C; K6C; CK-6C; CK-6E; keratin 6E; keratin-6C; keratin K6h; cytokeratin-6C; cytokeratin-6E; type-II keratin Kb12; K6E; KRT6E; MGC102925; MGC163455; MGC163457;

Gene ID 286887

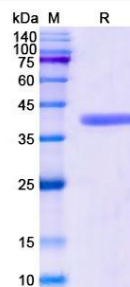
mRNA Refseq NM_173086

Protein Refseq NP_775109

MIM 612315

UniProt ID P48668

SDS-PAGE



 Tel: 1-631-559-9269 1-516-512-3133

 Email: info@creative-biomart.com  Fax: 1-631-938-8127

 45-1 Ramsey Road, Shirley, NY 11967, USA