

Recombinant Human KRT6C protein, His & T7-tagged

Cat. No. KRT6C-8214H Lot. No. (See product label)

SPECIFICATION

Product Overview	Recombinant Human KRT6C aa. (Glu163~Gly482 (Accession # P48668)) fused with N-terminal His & T7 tag was produced in E. coli cells.
Species	Human
Source	E.coli
ProteinLength	Glu163~Gly482
Description	Keratins are intermediate filament proteins responsible for the structural integrity of epithelial cells and are subdivided into epithelial keratins and hair keratins. The type II keratins are clustered in a region of chromosome 12q13.
Form	Freeze-dried powder
Molecular Mass	Predicted Molecular Mass: 40.8kDa.
Endotoxin	<1.0EU per 1ug (determined by the LAL method)
Purity	>95%
Characteristic	The isoelectric point is 5.5.
Applications	SDS-PAGE; WB; ELISA; IP.

 Tel: 1-631-559-9269 1-516-512-3133

 Email: info@creative-biomart.com  Fax: 1-631-938-8127

 45-1 Ramsey Road, Shirley, NY 11967, USA

Stability The thermal stability is described by the loss rate of the target protein. The loss rate was determined by accelerated thermal degradation test, that is, incubate the protein at 37°C for 48h, and no obvious degradation and precipitation were observed. (Referring from China Biological Products Standard, which was calculated by the Arrhenius equation.) The loss of this protein is less than 5% within the expiration date under appropriate storage condition.

Storage Avoid repeated freeze/thaw cycles. Store at 2-8°C for one month. Aliquot and store at -80°C for 12 months.

Storage Buffer Supplied as lyophilized form in PBS, pH7.4, containing 5% trehalose, 0.01% sarcosyl.

Reconstitution Reconstitute in sterile PBS, pH7.2-pH7.4.

GENE INFORMATION

Gene Name KRT6C keratin 6C [Homo sapiens (human)]

Official Symbol KRT6C

Synonyms KRT6C; keratin 6C; K6E; KRT6E; PPKNEFD; keratin, type II cytoskeletal 6C; CK-6C; CK-6E; K6C; cytokeratin-6C; cytokeratin-6E; keratin 6C, type II; keratin 6E; keratin K6h; type-II keratin Kb12

Gene ID 286887

mRNA Refseq NM_173086.4

Protein Refseq NP_775109.2

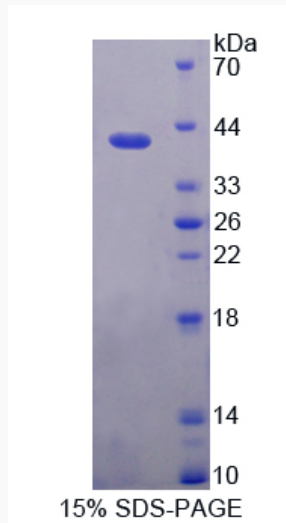
UniProt ID P48668

 Tel: 1-631-559-9269 1-516-512-3133

 Email: info@creative-biomart.com  Fax: 1-631-938-8127

 45-1 Ramsey Road, Shirley, NY 11967, USA

SDS-PAGE



 Tel: 1-631-559-9269 1-516-512-3133

 Email: info@creative-biomart.com  Fax: 1-631-938-8127

 45-1 Ramsey Road, Shirley, NY 11967, USA