

Recombinant Human KRT7 Protein (Glu91-Lys394), N-His tagged

Cat. No. KRT7-4387H Lot. No. (See product label)

SPECIFICATION

| | |
|-------------------------|---|
| Product Overview | Recombinant human KRT7 (Glu91-Lys394) fused with the N-His tag was expressed in E. coli. |
| Species | Human |
| Source | E.coli |
| ProteinLength | Glu91-Lys394 |
| Form | Lyophilized powder/frozen liquid |
| Molecular Mass | 37.13 kDa |
| Purity | >90% as determined by SDS-PAGE. |
| Notes | For research use only. |
| Storage | Use a manual defrost freezer and avoid repeated freeze thaw cycles. Store at 2 to 8 centigrade for one week. Store at -20 to -80 centigrade for twelve months from the date of receipt. |
| Storage Buffer | 0.01M PBS, pH 7.4, 0.02% NLS |
| Reconstitution | Reconstitute in sterile water for a stock solution. |

 Tel: 1-631-559-9269 1-516-512-3133

 Email: info@creative-biomart.com  Fax: 1-631-938-8127

 45-1 Ramsey Road, Shirley, NY 11967, USA

Shipping They are shipped out with dry ice/blue ice unless customers require otherwise.

GENE INFORMATION

Gene Name KRT7 keratin 7 [Homo sapiens (human)]

Official Symbol KRT7

Synonyms KRT7; keratin 7; keratin, type II cytoskeletal 7; CK7; cytokeratin 7; K2C7; K7; keratin; 55K type II cytoskeletal; type II cytoskeletal 7; sarcolectin; SCL; CK-7; keratin-7; cytokeratin-7; type-II keratin Kb7; type II mesothelial keratin K7; keratin, 55K type II cytoskeletal; keratin, simple epithelial type I, K7; MGC3625; MGC129731;

Gene ID 3855

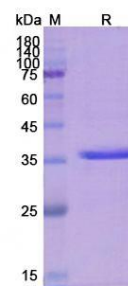
mRNA Refseq NM_005556

Protein Refseq NP_005547

MIM 148059

UniProt ID P08729

SDS-PAGE



Tel: 1-631-559-9269 1-516-512-3133

Email: info@creative-biomart.com Fax: 1-631-938-8127

45-1 Ramsey Road, Shirley, NY 11967, USA