

Recombinant Human KRT7 Protein, GST-tagged

Cat. No. KRT7-4843H **Lot. No.** (See product label)

SPECIFICATION

Product Overview	Human KRT7 full-length ORF (AAH02700.1, 1 a.a. - 469 a.a.) recombinant protein with GST-tag at N-terminal.
Species	Human
Source	Wheat Germ
Description	The protein encoded by this gene is a member of the keratin gene family. The type II cytokeratins consist of basic or neutral proteins which are arranged in pairs of heterotypic keratin chains coexpressed during differentiation of simple and stratified epithelial tissues. This type II cytokeratin is specifically expressed in the simple epithelia lining the cavities of the internal organs and in the gland ducts and blood vessels. The genes encoding the type II cytokeratins are clustered in a region of chromosome 12q12-q13. Alternative splicing may result in several transcript variants; however, not all variants have been fully described. [provided by RefSeq]
Molecular Mass	77.8 kDa
AA Sequence	MSIHFSPPVFTSRSAAFSGRGAQVRLSSARPGGLGSSSLYGLGASRPRVAVRSAYG GPVGAGIREVTINQSL LAPLRDADPSLQVRQEESQIKTLNKNFASFIDKVRFLEQ QNKLLTKWTL LQE QKSAKSSRLPDIFE AQIAGLRGQLEALQVDGGRLEAELRSMQ DVVEDFKNKYEDEINRR TAAENEFVVLK KDVDAA YMSKVELEAKVDALNDEINFLRT LNETELTELQSQISDTSVVL SMDNSRSLDLGIIAEVKAQYEEMAKCSRAEAEAWYQ TKFETLQAQAGKHGDDL RNRNEISEMNRAIQRLQAEIDNIKNQRAKLEAAIAEAEER

 Tel: 1-631-559-9269 1-516-512-3133

 Email: info@creative-biomart.com  Fax: 1-631-938-8127

 45-1 Ramsey Road, Shirley, NY 11967, USA

GELALKDARAKQEELEAALQRAKQDMARQLREYQELMSVKLALDIEIATYRKLEGE
 ESRLAGDGVGAVNISVMNSTGGSSSGGGIGLTLGGTMGSNALSFSSSAGPGLLKAY
 SIRTASASRRSARD

Applications	Enzyme-linked Immunoabsorbent Assay Western Blot (Recombinant protein) Antibody Production Protein Array
Notes	Best use within three months from the date of receipt of this protein.
Storage	Store at -80 centigrade. Aliquot to avoid repeated freezing and thawing.
Storage Buffer	50 mM Tris-HCl, 10 mM reduced Glutathione, pH=8.0 in the elution buffer.

GENE INFORMATION

Gene Name	KRT7 keratin 7 [Homo sapiens]
Official Symbol	KRT7
Synonyms	KRT7; keratin 7; keratin, type II cytoskeletal 7; CK7; cytokeratin 7; K2C7; K7; keratin; 55K type II cytoskeletal; type II cytoskeletal 7; sarcolectin; SCL; CK-7; keratin-7; cytokeratin-7; type-II keratin Kb7; type II mesothelial keratin K7; keratin, 55K type II cytoskeletal; keratin, simple epithelial type I, K7; MGC3625; MGC129731;
Gene ID	3855
mRNA Refseq	NM_005556
Protein Refseq	NP_005547

 Tel: 1-631-559-9269 1-516-512-3133

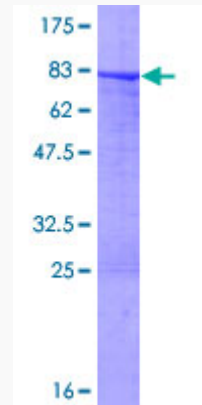
 Email: info@creative-biomart.com  Fax: 1-631-938-8127

 45-1 Ramsey Road, Shirley, NY 11967, USA

MIM 148059

UniProt ID P08729

**Quality Control
Testing**



12.5% SDS-PAGE Stained with Coomassie Blue

 Tel: 1-631-559-9269 1-516-512-3133

 Email: info@creative-biomart.com  Fax: 1-631-938-8127

 45-1 Ramsey Road, Shirley, NY 11967, USA