

Recombinant Human KRT71 Protein, GST-tagged

Cat. No. KRT71-4844H **Lot. No.** (See product label)

SPECIFICATION

Product Overview	Human KRT6IRS partial ORF (NP_258259.1, 251 a.a. - 332 a.a.) recombinant protein with GST-tag at N-terminal.
Species	Human
Source	Wheat Germ
Description	Keratins are intermediate filament proteins responsible for the structural integrity of epithelial cells and are subdivided into epithelial keratins and hair keratins. This gene encodes a protein that is expressed in the inner root sheath of hair follicles. The type II keratins are clustered in a region of chromosome 12q13
Molecular Mass	34.76 kDa
AA Sequence	LQAKVESMDQEIKFFRCLFEAEITQIQSHISDMSVILSMDNNRNLDLDSIIDEVRTQYE EIALKSKAEAEALYQTKFQELQL
Applications	Enzyme-linked Immunoabsorbent Assay Western Blot (Recombinant protein) Antibody Production Protein Array
Notes	Best use within three months from the date of receipt of this protein.
Storage	Store at -80 centigrade. Aliquot to avoid repeated freezing and thawing.

 Tel: 1-631-559-9269 1-516-512-3133

 Email: info@creative-biomart.com  Fax: 1-631-938-8127

 45-1 Ramsey Road, Shirley, NY 11967, USA

Storage Buffer 50 mM Tris-HCl, 10 mM reduced Glutathione, pH=8.0 in the elution buffer.

GENE INFORMATION

Gene Name KRT71 keratin 71 [Homo sapiens]

Official Symbol KRT71

Synonyms KRT71; keratin 71; keratin, type II cytoskeletal 71; K6IRS1; KRT6IRS; KRT6IRS1; K71; CK-71; hK6irs; hK6irs1; keratin-71; keratin 6 irs; cytokeratin-71; type-II keratin Kb34; type II inner root sheath-specific keratin-K6irs1; MGC119390; MGC119391;

Gene ID 112802

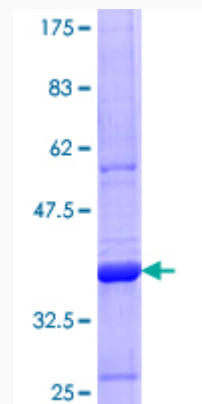
mRNA Refseq NM_033448

Protein Refseq NP_258259

MIM 608245

UniProt ID Q3SY84

Quality Control Testing



Tel: 1-631-559-9269 1-516-512-3133

Email: info@creative-biomart.com Fax: 1-631-938-8127

45-1 Ramsey Road, Shirley, NY 11967, USA



12.5% SDS-PAGE Stained with Coomassie Blue

 Tel: 1-631-559-9269 1-516-512-3133

 Email: info@creative-biomart.com  Fax: 1-631-938-8127

 45-1 Ramsey Road, Shirley, NY 11967, USA