

Recombinant Human KRT77 Protein (1-578 aa), His-SUMO-tagged

Cat. No. KRT77-1050H Lot. No. (See product label)

SPECIFICATION

Product Overview Recombinant Human KRT77 Protein (1-578 aa) is produced by E. coli expression system. This protein is fused with a 6xHis-SUMO tag at the N-terminal. Research Area: Signal Transduction. Protein Description: Full Length.

Species Human

Source E.coli

ProteinLength 1-578 aa

Form Tris-based buffer, 50% glycerol


Molecular Mass 77.9 kDa

AA Sequence

```
MSHQFSSQSAFSSMSRRVYSTSSSAGSGGGSPAVGSVCYARGRCGGGGYGIHGR
GFGSRSLYNLGGSRSISINLMGRSTSGFCQGGGVGGFGGGRGFGVVGSTGAGGFG
GGGFGGAGFGTNSFGLGGFGPYCPPGGIQEVTINQSLLEPLHLEVDPEIQRIKTQER
EQIMVLNNKFASFIDKVRFLQEQNQVLQTKWELLQQVNTSTGTNNLEPLLENYIGDL
RRQVDLLSAEQMRQNAEVRSMQDVVEDYKSKYEDEINKRTGSENDVVLKKDVDA
AYVSKVDLESRVDTLTGEVNFLKYLFLTELSQVQTHISDTNVILSMDNNRSLDLSIID
AVRTQYELIAQRSKDEAEALYQTKYQELQITAGRHGDDLKNSKMEIAELNRTVQRLQ
AEISNVKKQIEQMQLSLISDAEERGEQALQDAWQKLQDLEEALQQSKEELARLLRDY
QAMLGVKLSLDVEIATYRQLLEGEESRMSGELQSHVSISVQNSQVSVNGGAGGGG
SYGSGGYGGGSGGGYGGGRSYRGGGARGRSGGGYGSGCGGGGGSYGGSGRS
```

 Tel: 1-631-559-9269 1-516-512-3133

 Email: info@creative-biomart.com  Fax: 1-631-938-8127

 45-1 Ramsey Road, Shirley, NY 11967, USA

GRGSSRVQIIQTSTNTSHRRILE

Purity > 90% as determined by SDS-PAGE.

Notes Repeated freezing and thawing is not recommended. Store working aliquots at 4 centigrade for up to one week.

Storage The shelf life is related to many factors, storage state, buffer ingredients, storage temperature and the stability of the protein itself. Generally, the shelf life of liquid form is 6 months at -20 centigrade/-80 centigrade. The shelf life of lyophilized form is 12 months at -20 centigrade/-80 centigrade.

Concentration A hardcopy of COA with concentration instruction is sent along with the products.

GENE INFORMATION

Gene Name [KRT77 keratin 77 \[Homo sapiens \(human\) \]](#)

Official Symbol [KRT77](#)

Synonyms K1B; KRT1B;

Gene ID [374454](#)

mRNA Refseq [NM_175078](#)

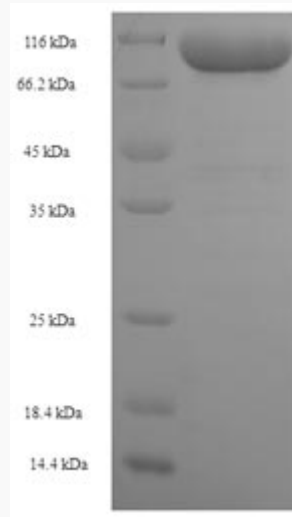
Protein Refseq [NP_778253](#)

UniProt ID [Q7Z794](#)

 Tel: 1-631-559-9269 1-516-512-3133

 Email: info@creative-biomart.com  Fax: 1-631-938-8127

 45-1 Ramsey Road, Shirley, NY 11967, USA



(Tris-Glycine gel) Discontinuous SDS-PAGE (reduced) with 5% enrichment gel and 15% separation gel.

 Tel: 1-631-559-9269 1-516-512-3133

 Email: info@creative-biomart.com  Fax: 1-631-938-8127

 45-1 Ramsey Road, Shirley, NY 11967, USA