

Recombinant Human KRT8 Protein, GST-tagged

Cat. No. KRT8-4835H **Lot. No.** (See product label)

SPECIFICATION

Product Overview	Human KRT8 full-length ORF (NP_002264.1, 1 a.a. - 483 a.a.) recombinant protein with GST-tag at N-terminal.
Species	Human
Source	Wheat Germ
Description	This gene is a member of the type II keratin family clustered on the long arm of chromosome 12. Type I and type II keratins heteropolymerize to form intermediate-sized filaments in the cytoplasm of epithelial cells. The product of this gene typically dimerizes with keratin 18 to form an intermediate filament in simple single-layered epithelial cells. This protein plays a role in maintaining cellular structural integrity and also functions in signal transduction and cellular differentiation. Mutations in this gene cause cryptogenic cirrhosis. [provided by RefSeq]
Molecular Mass	80.1 kDa
AA Sequence	MSIRVTQKSYKVSTSGPRAFSSRSYTSRSGPSRISSSSFVRVSSNFRGGLGGGYGG ASGMGGITAVTVNQSLLSPLVLEVDPNIQAVRTQEKEQIKTLNKNFASFIDKVRFLEQ QNKMLETKWSLLQQQKTARSNMDNMFESYINNLRRLQLETLGQEKLKLEAELGNMQ GLVEDDFKNKYEDEINKRTEMENEFVLIKKDVEAYMKNVELESRLGLELTDEINFLRQL YEEEIRELQSQISDTSVVLSDNSRSLDMSIIAEVKAQYEDIANRSRAEAESMYQIK YEELQSLAGKHGDDLRRTKTEISEMNRNISRSLQAEIEGLKGRASLEAAIADAEQRG ELAIKDANAKLSELEAALQRAKQDMARQLREYQELMNVKLALDIEIATYRKLEGEES

 Tel: 1-631-559-9269 1-516-512-3133

 Email: info@creative-biomart.com  Fax: 1-631-938-8127

 45-1 Ramsey Road, Shirley, NY 11967, USA

RLESGMQNMSIHTKTTSGYAGGLSSAYGGLTSPGLSYSLGSSFGSGAGSSSFRTS
SSRAVVVKKIETRDGKLVSESSDVLPK

Applications	Enzyme-linked Immunoabsorbent Assay Western Blot (Recombinant protein) Antibody Production Protein Array
Notes	Best use within three months from the date of receipt of this protein.
Storage	Store at -80 centigrade. Aliquot to avoid repeated freezing and thawing.
Storage Buffer	50 mM Tris-HCl, 10 mM reduced Glutathione, pH=8.0 in the elution buffer.

GENE INFORMATION

Gene Name	KRT8 keratin 8 [Homo sapiens]
Official Symbol	KRT8
Synonyms	KRT8; keratin 8; keratin, type II cytoskeletal 8; CARD2; CK8; CYK8; K2C8; K8; KO; cytokeratin 8; cytokeratin-8; type-II keratin Kb8; CK-8;
Gene ID	3856
mRNA Refseq	NM_001256282
Protein Refseq	NP_001243211
MIM	148060

 Tel: 1-631-559-9269 1-516-512-3133

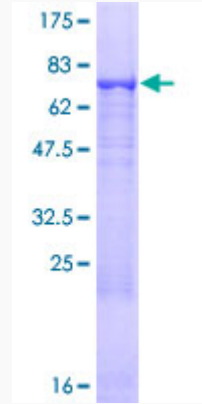
 Email: info@creative-biomart.com  Fax: 1-631-938-8127

 45-1 Ramsey Road, Shirley, NY 11967, USA

UniProt ID

P05787

Quality Control
Testing



12.5% SDS-PAGE Stained with Coomassie Blue

 Tel: 1-631-559-9269 1-516-512-3133

 Email: info@creative-biomart.com  Fax: 1-631-938-8127

 45-1 Ramsey Road, Shirley, NY 11967, USA