

Recombinant Full Length Human KRT8 Protein, C-Flag-tagged

Cat. No. KRT8-85HFL **Lot. No.** (See product label)

SPECIFICATION

Product Overview	Recombinant Full Length Human KRT8 Protein, fused to Flag-tag at C-terminus, was expressed in Mammalian cells.
Species	Human
Source	Mammalian Cells
Description	This gene is a member of the type II keratin family clustered on the long arm of chromosome 12. Type I and type II keratins heteropolymerize to form intermediate-sized filaments in the cytoplasm of epithelial cells. The product of this gene typically dimerizes with keratin 18 to form an intermediate filament in simple single-layered epithelial cells. This protein plays a role in maintaining cellular structural integrity and also functions in signal transduction and cellular differentiation. Mutations in this gene cause cryptogenic cirrhosis. Alternatively spliced transcript variants have been found for this gene.
Form	25 mM Tris HCl, pH 7.3, 100 mM glycine, 10% glycerol.
Molecular Mass	53.5 kDa
AA Sequence	MSIRVTQKSYKVSTSGPRAFSSRSYTS GPGSRISSSSF SRV GSSNFRGGLGGGYGG ASGMGGITAVTVNQ SLLSPLVLEVD PNIQAVRTQEKEQIKTLN NK FASFIDKVR FLEQ QNKMLETKWSLLQQQKTARSNMDNMF ESYNNLRRQLET LGQEKLKLEAELGNMQ GLVEDFKNKYEDEINKRTEMENEFVLIKKDVDEAYMNKVEL ESRLEGLTDEINFLRQ LYEEEIRELQSQISDTSVVL SMDNSRSLDMSIIAEVKAQYEDIANRSRAEAE S MYQI

 Tel: 1-631-559-9269 1-516-512-3133

 Email: info@creative-biomart.com  Fax: 1-631-938-8127

 45-1 Ramsey Road, Shirley, NY 11967, USA

KYEELQSLAGKHGDDLRRTKTEISEMNRNISRLQAEIEGLKGQRASLEAAIADAEQR
 GELAIKDAN AKLSELEAALQRAKQDMARQLREYQELMNVKLALDIEIATYRKLLIGE
 ESRLESGMQNMSIHTKTTSGYA
 GGLSSAYGGLTSPGLSYSLGSSFGSGAGSSSFRTSSSRVAVVKKIETRDGKLVSE
 SSDVLPKTRTRPLEQKLISEEDLAANDILDYKDDDDKV

Purity	> 80% as determined by SDS-PAGE and Coomassie blue staining.
Stability	Stable for 12 months from the date of receipt of the product under proper storage and handling conditions. Avoid repeated freeze-thaw cycles.
Storage	Store at -80 centigrade.
Concentration	>50 ug/mL as determined by microplate BCA method.
Preparation	Recombinant protein was captured through anti-DDK affinity column followed by conventional chromatography steps.
Protein Families	Druggable Genome
Full Length	Full L.

GENE INFORMATION

Gene Name	KRT8 keratin 8 [Homo sapiens (human)]
Official Symbol	KRT8
Synonyms	K8; KO; CK8; CK-8; CYK8; K2C8; CARD2
Gene ID	3856

 Tel: 1-631-559-9269 1-516-512-3133

 Email: info@creative-biomart.com  Fax: 1-631-938-8127

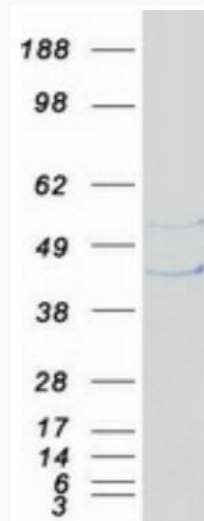
 45-1 Ramsey Road, Shirley, NY 11967, USA

mRNA Refseq [NM_002273.4](#)

Protein Refseq [NP_002264.1](#)

MIM [148060](#)

UniProt ID [P05787](#)



Coomassie blue staining of purified KRT8 protein.

 Tel: 1-631-559-9269 1-516-512-3133

 Email: info@creative-biomart.com  Fax: 1-631-938-8127

 45-1 Ramsey Road, Shirley, NY 11967, USA