

Recombinant Human KRT80 protein, His-tagged

Cat. No. KRT80-471H **Lot. No.** (See product label)

SPECIFICATION

Product Overview	Recombinant Human KRT80 protein(1-422 aa), fused with N-terminal His tag, was expressed in E.coli.
Species	Human
Source	E.coli
ProteinLength	1-422 aa
Form	The purified protein was Lyophilized from sterile PBS (58mM Na ₂ HPO ₄ , 17mM NaH ₂ PO ₄ , 68mM NaCl, pH7.4). 5 % trehalose and 5 % mannitol are added as protectant before lyophilization. The elution buffer contain 300mM imidazole.
AASequence	MACRSCVVGFFSSLSSCEVTPVGSPPGTSGWDSRAPGPGFSSRSLTGCWSAGTI SKVTVNPGLLVPLDVKLDPAVQQLKNQEKEEMKALNDKFAFLIGKVQALEQRNQLLE TRWSFLQGQDSAIFDLGHLYEEYQGRLEELRKVSQERGLLEANLLQVLEKVEEFRI RYEDEISKRTDMEFTFVQLKKDLDAECLHRTELETKLKSLESFVELMKTIIYEQELKDL AAQVKDVSVTVGMDSRCHIDLSGIVEEVKAQYDAVAARSLEEAEAYSRSQLEEQAA RSAEYGSSLQSSRSEIADLNVRIQKLRSQLSVKSHCLKLEENIKTAEEQGELAFQDA KTKLAQLEAALQQAQDMARQLRKYQELMNVKLALDIEIATYRKLVEGEEGRMDSP SATVVSQVSRCKTAPSLPYPLCSL
Purity	85%, by SDS-PAGE with Coomassie Brilliant Blue staining.
Storage	Store at 2-8°C for 1-2 weeks. Aliquot and store at -20°C to -80°C for up to 3 months,

 Tel: 1-631-559-9269 1-516-512-3133

 Email: info@creative-biomart.com  Fax: 1-631-938-8127

 45-1 Ramsey Road, Shirley, NY 11967, USA

reconstitution with sterile water and addition of an equal volume of glycerol. Avoid repeat freeze-thaw cycles.

Reconstitution

Dissolve the product in 200 µl sterile water to achieve a working concentration of 0.25 g/µl. If experimental compatibility allows, mix the aqueous solution with an equal volume of glycerol (1:1 ratio) after initial reconstitution.

GENE INFORMATION

Gene Name [KRT80 keratin 80 \[Homo sapiens \]](#)

Official Symbol [KRT80](#)

Synonyms KRT80; keratin 80; keratin, type II cytoskeletal 80; KB20; K80; CK-80; keratin-80; keratin b20; cytokeratin-80; type II keratin; type-II keratin Kb20;

Gene ID [144501](#)

mRNA Refseq [NM_001081492](#)

Protein Refseq [NP_001074961](#)

MIM [611161](#)

UniProt ID [Q6KB66](#)

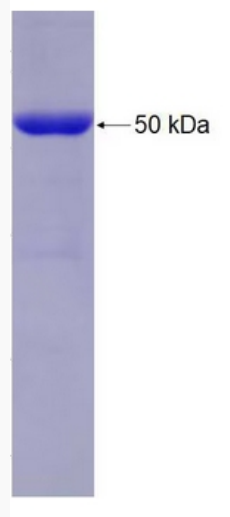
 Tel: 1-631-559-9269 1-516-512-3133

 Email: info@creative-biomart.com  Fax: 1-631-938-8127

 45-1 Ramsey Road, Shirley, NY 11967, USA



SDS-PAGE



Tel: 1-631-559-9269 1-516-512-3133

Email: info@creative-biomart.com Fax: 1-631-938-8127

45-1 Ramsey Road, Shirley, NY 11967, USA