

# Recombinant Human KRT81 Protein (Ser266-Gly420), N-His tagged

Cat. No. KRT81-4397H    Lot. No. (See product label)

## SPECIFICATION

<b>Product Overview</b>	Recombinant human KRT81 (Ser266-Gly420) fused with the N-His tag was expressed in E. coli.
<b>Species</b>	Human
<b>Source</b>	E.coli
<b>ProteinLength</b>	Ser266-Gly420
<b>Form</b>	Lyophilized powder/frozen liquid
<b>Molecular Mass</b>	20.04 kDa
<b>Purity</b>	>90% as determined by SDS-PAGE.
<b>Notes</b>	For research use only.
<b>Storage</b>	Use a manual defrost freezer and avoid repeated freeze thaw cycles. Store at 2 to 8 centigrade for one week. Store at -20 to -80 centigrade for twelve months from the date of receipt.
<b>Storage Buffer</b>	0.01M PBS, pH 7.4, 0.02% NLS
<b>Reconstitution</b>	Reconstitute in sterile water for a stock solution.

 Tel: 1-631-559-9269    1-516-512-3133

 Email: [info@creative-biomart.com](mailto:info@creative-biomart.com)     Fax: 1-631-938-8127

 45-1 Ramsey Road, Shirley, NY 11967, USA

**Shipping** They are shipped out with dry ice/blue ice unless customers require otherwise.

## GENE INFORMATION

**Gene Name** KRT81 keratin 81 [ Homo sapiens (human) ]

**Official Symbol** KRT81

**Synonyms** KRT81; keratin 81; keratin, hair, basic, 1, KRTHB1; keratin, type II cuticular Hb1; hard keratin type II 1; Hb 1; K81; ghHb1; MLN 137; keratin-81; hair keratin K2.9; type-II keratin Kb21; keratin, hair, basic, 1; hard keratin, type II, 1; type II hair keratin Hb1; metastatic lymph node 137 gene protein; HB1; Hb-1; KRTHB1; MLN137; ghHkb1; hHAKB2-1;

**Gene ID** 3887

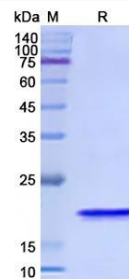
**mRNA Refseq** NM\_002281

**Protein Refseq** NP\_002272

**MIM** 602153

**UniProt ID** Q14533

## SDS-PAGE



Tel: 1-631-559-9269 1-516-512-3133

Email: [info@creative-biomart.com](mailto:info@creative-biomart.com) Fax: 1-631-938-8127

45-1 Ramsey Road, Shirley, NY 11967, USA