

Recombinant Human KRT81 Protein, GST-tagged

Cat. No. KRT81-4796H **Lot. No.** (See product label)

SPECIFICATION

Product Overview Human KRTHB1 full-length ORF (AAH21241, 1 a.a. - 202 a.a.) recombinant protein with GST-tag at N-terminal.

Species Human

Source Wheat Germ

Description

The protein encoded by this gene is a member of the keratin gene family. As a type II hair keratin, it is a basic protein which heterodimerizes with type I keratins to form hair and nails. The type II hair keratins are clustered in a region of chromosome 12q13 and are grouped into two distinct subfamilies based on structure similarity. One subfamily, consisting of KRTHB1, KRTHB3, and KRTHB6, is highly related. The other less-related subfamily includes KRTHB2, KRTHB4, and KRTHB5. All hair keratins are expressed in the hair follicle; this hair keratin, as well as KRTHB3 and KRTHB6, is found primarily in the hair cortex. Mutations in this gene and KRTHB6 have been observed in patients with a rare dominant hair disease, monilethrix. [provided by RefSeq]

Molecular Mass 47.96 kDa

AA Sequence

MKATVIRHGETLRRTKEEINELNRMIRQLTAEVENAKCQNSKLEAAVAQSEQQGEAA
 LSDARCKLAELEGALQKAKQDMACLIREYQEVMSKLGDLIEIATYRRLLLEGEEQRL
 CEGIGAVNVCVSSSRGGVCGDLCVSGSRPVTGVSVCAPCNGNVAVSTGLCAPCG
 QLNTTCGGGSCGVGSCGISSLVGSCGSSCRKC

 Tel: 1-631-559-9269 1-516-512-3133

 Email: info@creative-biomart.com  Fax: 1-631-938-8127

 45-1 Ramsey Road, Shirley, NY 11967, USA



Applications	Enzyme-linked Immunoabsorbent Assay Western Blot (Recombinant protein) Antibody Production Protein Array
Notes	Best use within three months from the date of receipt of this protein.
Storage	Store at -80 centigrade. Aliquot to avoid repeated freezing and thawing.
Storage Buffer	50 mM Tris-HCl, 10 mM reduced Glutathione, pH=8.0 in the elution buffer.

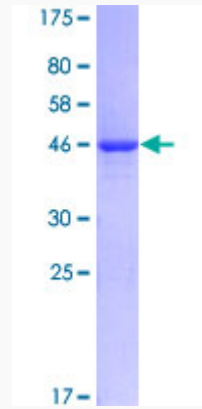
GENE INFORMATION

Gene Name	KRT81 keratin 81 [Homo sapiens]
Official Symbol	KRT81
Synonyms	KRT81; keratin 81; keratin, hair, basic, 1 , KRTHB1; keratin, type II cuticular Hb1; hard keratin type II 1; Hb 1; K81; ghHb1; MLN 137; keratin-81; hair keratin K2.9; type-II keratin Kb21; keratin, hair, basic, 1; hard keratin, type II, 1; type II hair keratin Hb1; metastatic lymph node 137 gene protein; HB1; Hb-1; KRTHB1; MLN137; ghHkb1; hHAKB2-1;
Gene ID	3887
mRNA Refseq	NM_002281
Protein Refseq	NP_002272
MIM	602153


UniProt ID

Q14533

Quality Control
Testing



12.5% SDS-PAGE Stained with Coomassie Blue

 Tel: 1-631-559-9269 1-516-512-3133

 Email: info@creative-biomart.com  Fax: 1-631-938-8127

 45-1 Ramsey Road, Shirley, NY 11967, USA