

Recombinant Human KRT9 Protein, Myc/DDK-tagged, C13 and N15-labeled

Cat. No. KRT9-2073H **Lot. No.** (See product label)

SPECIFICATION

Product Overview	KRT9 MS Standard C13 and N15-labeled recombinant protein (NP_000217) with a C-terminal MYC/DDK tag, was expressed in HEK293 cells.
Species	Human
Source	HEK293
Description	This gene encodes the type I keratin 9, an intermediate filament chain expressed only in the terminally differentiated epidermis of palms and soles. Mutations in this gene cause epidermolytic palmoplantar keratoderma.
Molecular Mass	61.9 kDa
AA Sequence	<p>MSCRQFSSSYLSRSGGGGGGLGSGGSIRSSYSRFSSSGGGGGGRFSSSSGYG GGSSRVCGRGGGGSFGYSYGGGSGGGFSASSLGGGFGGGSRGFGGASGGGYS SSGGFGGGFGGGSGGGFGGGYGSGFGGFGGGAGGGDGGILTANEKSTMQE LNSRLASYLDKVQALEEANNDLENKIQDWYDKKGPAAIQKNYSPYYNTIDDLKDQIV DLTVGNKNTLLDIDNTRMTLDDFRIKFEMEQLNRQGVADINGLRQVLDNLTMEKSD LEMQYETLQEELMALKKNHKEEMSQLTGQNSGDVNVEINVAPGKDLTKTLNDRMQ EYEQLIAKNRKDIENQYETQITQIEHEVSSSGQEVQSSAKEVTQLRHGVQELEIELQS QLSKKAALEKSLEDTKNRYCGQLQMIQEIQISNLEAQITDVRQEIECQNQEYSLLLSIK MRLEKEIETYHNLLEGGQEDFESSGAGKIGLGGRRGGSGGSYGRGSRGGSGGSYG GGGSGGGYGGGSGSRGGSGGSYGGGSGSGGGSGGGYGGGSGGGHSGGSGGG</p>

 Tel: 1-631-559-9269 1-516-512-3133

 Email: info@creative-biomart.com  Fax: 1-631-938-8127

 45-1 Ramsey Road, Shirley, NY 11967, USA

HSGGSGGN YGGGSGSGGGSGGGYGGGSGSRGGSGGSHGGGSGFGGESGGSY
GGGEEASGSGGGYGGGSGKSSHSTRTRPLEQKLISEEDLAANDILDYKDDDDKV

Purity > 80% as determined by SDS-PAGE and Coomassie blue staining

Stability Stable for 3 months from receipt of products under proper storage and handling conditions.

Storage Store at -80 centigrade. Avoid repeated freeze-thaw cycles.

Concentration 50 µg/mL as determined by BCA

Storage Buffer 100 mM glycine, 25 mM Tris-HCl, pH 7.3.

GENE INFORMATION

Gene Name KRT9 keratin 9 [Homo sapiens (human)]

Official Symbol KRT9

Synonyms KRT9; keratin 9; keratin, type I cytoskeletal 9; CK 9; cytokeratin 9; epidermolytic palmoplantar keratoderma; EPPK; K9; type I cytoskeletal 9; keratin-9; cytokeratin-9; CK-9;

Gene ID 3857

mRNA Refseq NM_000226

Protein Refseq NP_000217

MIM 607606

 Tel: 1-631-559-9269 1-516-512-3133

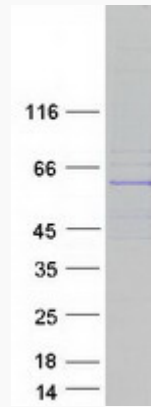
 Email: info@creative-biomart.com  Fax: 1-631-938-8127

 45-1 Ramsey Road, Shirley, NY 11967, USA

UniProt ID

P35527

SDS-PAGE



 Tel: 1-631-559-9269 1-516-512-3133

 Email: info@creative-biomart.com  Fax: 1-631-938-8127

 45-1 Ramsey Road, Shirley, NY 11967, USA