

Recombinant Human KRT9 Protein, GST-tagged

Cat. No. KRT9-4829H **Lot. No.** (See product label)

SPECIFICATION

Product Overview	Human KRT9 full-length ORF (AAI67813.1, 1 a.a. - 623 a.a.) recombinant protein with GST tag at N-terminal.
Species	Human
Source	Wheat Germ
Description	This gene encodes the type I keratin 9, an intermediate filament chain expressed only in the terminally differentiated epidermis of palms and soles. Mutations in this gene cause epidermolytic palmoplantar keratoderma. [provided by RefSeq]
Molecular Mass	95 kDa
AA Sequence	<p>MSCRQFSSSYLSRSGGGGGGLGSGGSIRSSYSRFSSSGGGGGGGRFSSSSGYG GGSSRVCGRGGGGSFGYSYGGGSGGGFSASSLGGGFGGGSRGFGGASGGGYS SSGGFGGGFGGGSGGGFGGGYGSGFGGFGGFGGGAGGGDGGILTANEKSTMQE LNSRLASYLDKVQALEEANNDLENKIQDWYDKKGPAAIQKNYSPYYNTIDDLKDQIV DLTVGNKTLLEDIDNTRMTLDDFRIKFEMEQLNRQGV DADINLRQVLDNLTMEKSD LEMQYETLQEELMALKKNHKEEMSQLTGQNSGDVNVEINVAPGKDLTKTLNDMRQ EYEQLIAKNRKDIENQYETQITQIEHEVSSSGQEVQSSAKEVTQLRHGVQELEIELQS QLSKKAALEKSLEDTKNRYCGQLQMIQEIQISNLEAQITDVRQEIECQNQEYSLLSIK MRLEKEIETYHNLLEGGQEDFESSGAGKIGLGRGGSGGSYGRGSRGGSGGSYG GGGSGGGYGGGSGSRGGSGGSYGGGSGSGGGSGGGYGGGSGGGHSGGSGGG HSGGSGGNYGGGSGSGGGSGGGYGGGSGSRGGSGGSHGGGSGFGGESGGSY</p>

 Tel: 1-631-559-9269 1-516-512-3133

 Email: info@creative-biomart.com  Fax: 1-631-938-8127

 45-1 Ramsey Road, Shirley, NY 11967, USA

GGGEEASGSGGGYGGGSGKSSHS

Applications

Enzyme-linked Immunoabsorbent Assay
 Western Blot (Recombinant protein)
 Antibody Production
 Protein Array

Notes

Best use within three months from the date of receipt of this protein.

Storage

Store at -80 centigrade. Aliquot to avoid repeated freezing and thawing.

Storage Buffer

50 mM Tris-HCl, 10 mM reduced Glutathione, pH=8.0 in the elution buffer.

GENE INFORMATION

Gene Name

[KRT9 keratin 9 \[Homo sapiens \]](#)

Official Symbol

[KRT9](#)

Synonyms

KRT9; keratin 9; keratin, type I cytoskeletal 9; CK 9; cytokeratin 9; epidermolytic palmoplantar keratoderma; EPPK; K9; type I cytoskeletal 9; keratin-9; cytokeratin-9; CK-9;

Gene ID

[3857](#)

mRNA Refseq

[NM_000226](#)

Protein Refseq

[NP_000217](#)

MIM

[607606](#)

 Tel: 1-631-559-9269 1-516-512-3133

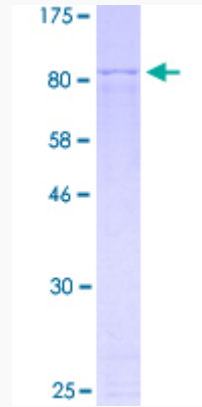
 Email: info@creative-biomart.com  Fax: 1-631-938-8127

 45-1 Ramsey Road, Shirley, NY 11967, USA

UniProt ID

P35527

Quality Control
Testing



12.5% SDS-PAGE Stained with Coomassie Blue

 Tel: 1-631-559-9269 1-516-512-3133

 Email: info@creative-biomart.com  Fax: 1-631-938-8127

 45-1 Ramsey Road, Shirley, NY 11967, USA