

Recombinant Human KRTAP1-5 Protein, GST-tagged

Cat. No. KRTAP1-5-4821H Lot. No. (See product label)

SPECIFICATION

Product Overview	Human KRTAP1-5 full-length ORF (NP_114163.1, 1 a.a. - 174 a.a.) recombinant protein with GST-tag at N-terminal.
Species	Human
Source	Wheat Germ
ProteinLength	1-174 a.a.
Description	This protein is a member of the keratin-associated protein (KAP) family. The KAP proteins form a matrix of keratin intermediate filaments which contribute to the structure of hair fibers. KAP family members appear to have unique, family-specific amino- and carboxyl-terminal regions and are subdivided into three multi-gene families according to amino acid composition: the high sulfur, the ultrahigh sulfur, and the high tyrosine/glycine KAPs. This protein is a member of the high sulfur KAP family and the gene is localized to a cluster of KAPs at 17q12-q21. [provided by RefSeq
Molecular Mass	44.4 kDa
AA Sequence	MTCCQTSFCGYPSFSISGTCGSSCCQPSCCETSCCQPRSCQTSFCGFPSFSTSGT CSSSCCQPSCCETSCCQPSCCETSCCQPSCCQISSCGTGCGIGGGISYQGEGSSG AVSTRIRWCRPDSRVEGTYLPPCCVVSTPPSCCQLHHAQASCCRPSYCGQSCCR PVCCCEPTC
Applications	Enzyme-linked Immunoabsorbent Assay

 Tel: 1-631-559-9269 1-516-512-3133

 Email: info@creative-biomart.com  Fax: 1-631-938-8127

 45-1 Ramsey Road, Shirley, NY 11967, USA

Western Blot (Recombinant protein)
 Antibody Production
 Protein Array

Notes	Best use within three months from the date of receipt of this protein.
Storage	Store at -80 centigrade. Aliquot to avoid repeated freezing and thawing.
Storage Buffer	50 mM Tris-HCl, 10 mM reduced Glutathione, pH=8.0 in the elution buffer.

GENE INFORMATION

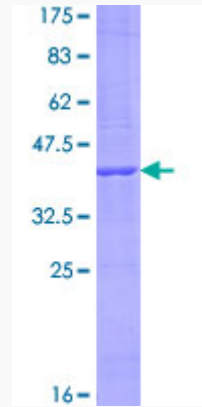
Gene Name	KRTAP1-5 keratin associated protein 1-5 [Homo sapiens]
Official Symbol	KRTAP1-5
Synonyms	KRTAP1-5; keratin associated protein 1-5; keratin-associated protein 1-5; KAP1.5; keratin associated protein 1.5; keratin-associated protein 1.5; high sulfur keratin-associated protein 1.5; KRTAP1.5; MGC126604;
Gene ID	83895
mRNA Refseq	NM_031957
Protein Refseq	NP_114163
MIM	608822
UniProt ID	Q9BYS1

 Tel: 1-631-559-9269 1-516-512-3133

 Email: info@creative-biomart.com  Fax: 1-631-938-8127

 45-1 Ramsey Road, Shirley, NY 11967, USA

**Quality Control
Testing**



12.5% SDS-PAGE Stained with Coomassie Blue

 Tel: 1-631-559-9269 1-516-512-3133

 Email: info@creative-biomart.com  Fax: 1-631-938-8127

 45-1 Ramsey Road, Shirley, NY 11967, USA