

Recombinant Human kinase suppressor of ras 1 Protein, His tagged

Cat. No. KSR1-008H **Lot. No.** (See product label)

SPECIFICATION

Product Overview	Recombinant human KSR1 protein (Q8IVT5) (Glu 27-Gly 172) with a His tag at the C-terminus was expressed in E. coli.
Species	Human
Source	E.coli
ProteinLength	27-172aa
Description	Part of a multiprotein signaling complex which promotes phosphorylation of Raf family members and activation of downstream MAP kinases. Independently of its kinase activity, acts as MAP2K1/MEK1 and MAP2K2/MEK2-dependent allosteric activator of BRAF; upon binding to MAP2K1/MEK1 or MAP2K2/MEK2, dimerizes with BRAF and promotes BRAF-mediated phosphorylation of MAP2K1/MEK1 and/or MAP2K2/MEK2. Promotes activation of MAPK1 and/or MAPK3, both in response to EGF and to cAMP. Its kinase activity is unsure. Some protein kinase activity has been detected in vitro, however the physiological relevance of this activity is unknown.
Tag	C-His
Molecular Mass	17.9 kDa
Endotoxin	Less than 1.0 EU/μg by the LAL method.

 Tel: 1-631-559-9269 1-516-512-3133

 Email: info@creative-biomart.com  Fax: 1-631-938-8127

 45-1 Ramsey Road, Shirley, NY 11967, USA

Purity	>95% as determined by SDS-PAGE.
Storage	Please avoid repeated freeze-thaw cycles. Samples are stable for up to twelve months from date of receipt at -20 to -80 centigrade. It is recommended that aliquot the reconstituted solution to minimize freeze-thaw cycles.
Storage Buffer	Lyophilized from a 0.2 µm filtered solution of PBS, pH7.4, 5% Trehalose, 5% mannitol.
Reconstitution	Reconstitute at 250 µg/mL in sterile water.

GENE INFORMATION

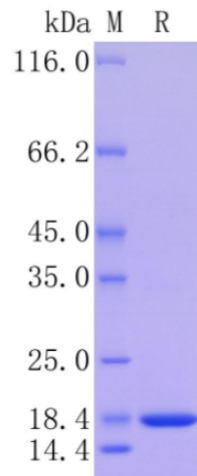
Gene Name	KSR1 kinase suppressor of ras 1 [Homo sapiens (human)]
Official Symbol	KSR1
Synonyms	KSR1; kinase suppressor of ras 1; kinase suppressor of ras, KSR; kinase suppressor of Ras 1; RSU2; KSR;
Gene ID	8844
mRNA Refseq	NM_014238
Protein Refseq	NP_055053
MIM	601132
UniProt ID	Q8IVT5

 Tel: 1-631-559-9269 1-516-512-3133

 Email: info@creative-biomart.com  Fax: 1-631-938-8127

 45-1 Ramsey Road, Shirley, NY 11967, USA

**Protein on SDS-
PAGE under
reducing (R)
condition.**



 Tel: 1-631-559-9269 1-516-512-3133

 Email: info@creative-biomart.com  Fax: 1-631-938-8127

 45-1 Ramsey Road, Shirley, NY 11967, USA