

## Recombinant Human KSR1 Protein, GST-tagged

**Cat. No.** KSR1-4795H    **Lot. No.** (See product label)

### SPECIFICATION

<b>Product Overview</b>	Human KSR partial ORF ( XP_290793, 301 a.a. - 400 a.a.) recombinant protein with GST-tag at N-terminal.
<b>Species</b>	Human
<b>Source</b>	Wheat Germ
<b>Description</b>	KSR1 (Kinase Suppressor Of Ras 1) is a Protein Coding gene. Among its related pathways are RET signaling and MAPK Signaling: Mitogen Stimulation Pathway. GO annotations related to this gene include transferase activity, transferring phosphorus-containing groups and protein tyrosine kinase activity. An important paralog of this gene is KSR2.
<b>Molecular Mass</b>	36.63 kDa
<b>AA Sequence</b>	LDARRESGSGPSTDTLSAASLPWPPGSSQLGRAGNSAQQGPRISISVSALPASDSPTP SFSEGLSDTCIPLHASGRLTPRALHSFITPPTTPQLRRHTKLKP
<b>Applications</b>	Enzyme-linked Immunoabsorbent Assay Western Blot (Recombinant protein) Antibody Production Protein Array
<b>Notes</b>	Best use within three months from the date of receipt of this protein.

 Tel: 1-631-559-9269    1-516-512-3133

 Email: [info@creative-biomart.com](mailto:info@creative-biomart.com)     Fax: 1-631-938-8127

 45-1 Ramsey Road, Shirley, NY 11967, USA

**Storage** Store at -80 centigrade. Aliquot to avoid repeated freezing and thawing.

**Storage Buffer** 50 mM Tris-HCl, 10 mM reduced Glutathione, pH=8.0 in the elution buffer.

## GENE INFORMATION

**Gene Name** [KSR1 kinase suppressor of ras 1 \[ Homo sapiens \]](#)

**Official Symbol** [KSR1](#)

**Synonyms** KSR1; kinase suppressor of ras 1; kinase suppressor of ras , KSR; kinase suppressor of Ras 1; RSU2; KSR;

**Gene ID** [8844](#)

**mRNA Refseq** [NM\\_014238](#)

**Protein Refseq** [NP\\_055053](#)

**MIM** [601132](#)

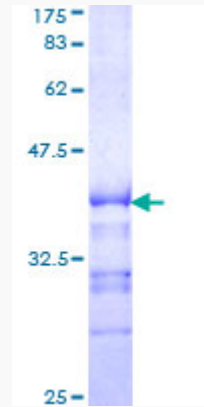
**UniProt ID** [Q8IVT5](#)

 Tel: 1-631-559-9269 1-516-512-3133

 Email: [info@creative-biomart.com](mailto:info@creative-biomart.com)  Fax: 1-631-938-8127

 45-1 Ramsey Road, Shirley, NY 11967, USA

**Quality Control  
Testing**



12.5% SDS-PAGE Stained with Coomassie Blue

 Tel: 1-631-559-9269 1-516-512-3133

 Email: [info@creative-biomart.com](mailto:info@creative-biomart.com)  Fax: 1-631-938-8127

 45-1 Ramsey Road, Shirley, NY 11967, USA