

## Recombinant Human KSR1 Protein, 335-end, N-GST tagged

Cat. No. KSR1-60H Lot. No. (See product label)

### SPECIFICATION

<b>Product Overview</b>	Recombinant human KSR1 (335-end) was expressed by baculovirus in Sf9 insect cells using an N-terminal GST tag.
<b>Species</b>	Human
<b>Source</b>	Sf9 Cells
<b>ProteinLength</b>	335-end
<b>Description</b>	Enables 14-3-3 protein binding activity; ATP binding activity; and protein C-terminus binding activity. Involved in positive regulation of MAPK cascade. Located in endoplasmic reticulum and membrane. Part of protein-containing complex. Implicated in breast adenocarcinoma. Biomarker of breast cancer.
<b>Molecular Mass</b>	105 kDa
<b>Purity</b>	The purity of KSR1 was determined to be > 70% by densitometry, approx. MW 105 kDa.
<b>Stability</b>	One year at -70 centigrade from date of shipment.
<b>Storage</b>	Store product at -70 centigrade. For optimal storage, aliquot target into smaller quantities after centrifugation and store at recommended temperature. For most favorable performance, avoid repeated handling and multiple freeze/thaw cycles.

 Tel: 1-631-559-9269 1-516-512-3133

 Email: [info@creative-biomart.com](mailto:info@creative-biomart.com)  Fax: 1-631-938-8127

 45-1 Ramsey Road, Shirley, NY 11967, USA

<b>Concentration</b>	0.1 µg/µL
<b>Storage Buffer</b>	Recombinant protein stored in 50mM Tris-HCl, pH 7.5, 150mM NaCl, 10mM glutathione, 0.1mM EDTA, 0.25mM DTT, 0.1mM PMSF, 25% glycerol.
<b>Shipping</b>	Dry ice
<b>References</b>	<ol style="list-style-type: none"> <li>1. Yan. et.al: Kinase suppressor of Ras-1 protects intestinal epithelium from cytokine-mediated apoptosis during inflammation. J. Clin. Invest. 114: 1272-1280, 2004.</li> <li>2. Zhang. et.al: Kinase suppressor of Ras-1 protects against pulmonary Pseudomonas aeruginosa infections. Nature Med. 17: 341-346, 2011.</li> </ol>

## GENE INFORMATION

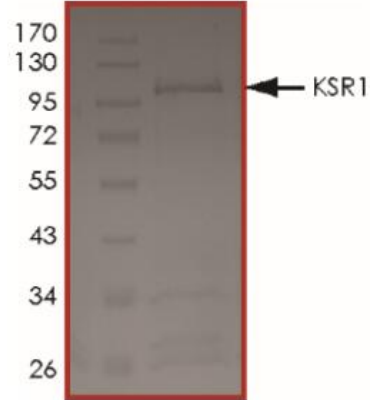
<b>Gene Name</b>	<a href="#">KSR1 kinase suppressor of ras 1 [ Homo sapiens (human) ]</a>
<b>Official Symbol</b>	<a href="#">KSR1</a>
<b>Synonyms</b>	KSR1; kinase suppressor of ras 1; KSR; RSU2; kinase suppressor of Ras 1; EC 2.7.11.1
<b>Gene ID</b>	<a href="#">8844</a>
<b>mRNA Refseq</b>	<a href="#">NM_014238</a>
<b>Protein Refseq</b>	<a href="#">NP_055053</a>
<b>MIM</b>	<a href="#">601132</a>
<b>UniProt ID</b>	<a href="#">A0A0A0MQW1</a>

 Tel: 1-631-559-9269 1-516-512-3133

 Email: [info@creative-biomart.com](mailto:info@creative-biomart.com)  Fax: 1-631-938-8127

 45-1 Ramsey Road, Shirley, NY 11967, USA

Purity



 Tel: 1-631-559-9269 1-516-512-3133

 Email: [info@creative-biomart.com](mailto:info@creative-biomart.com)  Fax: 1-631-938-8127

 45-1 Ramsey Road, Shirley, NY 11967, USA