

Recombinant Human KSR2 Protein, GST-tagged

Cat. No. KSR2-4793H **Lot. No.** (See product label)

SPECIFICATION

Product Overview	Human KSR2 full-length ORF (NP_775869.2, 1 a.a. - 829 a.a.) recombinant protein with GST-tag at N-terminal.
Species	Human
Source	Wheat Germ
Description	KSR2 (Kinase Suppressor Of Ras 2) is a Protein Coding gene. Among its related pathways are MAPK-Erk Pathway and RET signaling. GO annotations related to this gene include transferase activity, transferring phosphorus-containing groups and protein tyrosine kinase activity. An important paralog of this gene is KSR1.
Molecular Mass	120 kDa
AA Sequence	<p>MTDEQVCETVEKYGANREECARLNASLSCLRNVHMSGGNSLKQDWTIQWPTTETG KENNPVCPPEPTPWIRTHLSQSPRVPSKCVQHYCHTSPTPGAPVYTHVDRLTVDAY PGLCPPPPLESGHRSLPPSPRQRHAVRTPRTPNIVTTVTPPGTTPMRKKNKPKPP GTPPPSSRKLIIHLIPGFALHRSKSHEFQLGHRVDEAHTPKAKKSKPLNLKIHSSVG SCENIPSQQRSPLLSERSLRSFFVGHAPFLPSTPPVHTEANFSANTLSVPRWSPQIP RRDLGNSIKHRFSTKYWMSQTCTVCGKGMFLGLKCKNCKLKCHNKCTKEAPPCHL LIIHRGDPARLVRTESVPCDINNPLRKPPRYSDLHISQTLPKTNKINKDHIPVPYQPDS SSNPSSTTSSTPSSPAPPLPPSATPPSPLHPSQCTRQQKNFNLPASHYYKYKQQFI FPDVVPVPETPTRAPQVILHPVTSNPILGNPLLQIEVEPTSENEEVHDEAESEDDF EEMNLSLLSARSFPRKASQTSIFLQEWDPFEQLEIGELIGKGRFGQVYHGRWHGEV</p>

 Tel: 1-631-559-9269 1-516-512-3133

 Email: info@creative-biomart.com  Fax: 1-631-938-8127

 45-1 Ramsey Road, Shirley, NY 11967, USA

AIRLIDIERDNEDQLKAFKREVMAYRQTRHENVVLFMGACMSPPHLAIITSLCKGRTL
 YSVVRDAKIVLDV NKTRQIAQEIVKGMGYLHAKGILHKDLKSKNVFYDNGKVVITDFG
 LFSISGVLQAGRREDKLRIQNGWLCHLAPEIIRQLSPDTEEDKLPFSKHSDFALGTI
 WYELHAREWPFKTQPAEAIWQMGTGMKPNLSQIGMGKEISDILLFCWAFEQEERP
 TFTKLMDMLEKLPKRNRRLSHPGHFWKSAEL

Applications
 Enzyme-linked Immunoabsorbent Assay
 Western Blot (Recombinant protein)
 Antibody Production
 Protein Array

Notes
 Best use within three months from the date of receipt of this protein.

Storage
 Store at -80 centigrade. Aliquot to avoid repeated freezing and thawing.

Storage Buffer
 50 mM Tris-HCl, 10 mM reduced Glutathione, pH=8.0 in the elution buffer.

GENE INFORMATION

Gene Name [KSR2 kinase suppressor of ras 2 \[Homo sapiens \]](#)

Official Symbol [KSR2](#)

Synonyms KSR2; kinase suppressor of ras 2; kinase suppressor of Ras 2; FLJ25965;

Gene ID [283455](#)

mRNA Refseq [NM_173598](#)

Protein Refseq [NP_775869](#)

 Tel: 1-631-559-9269 1-516-512-3133

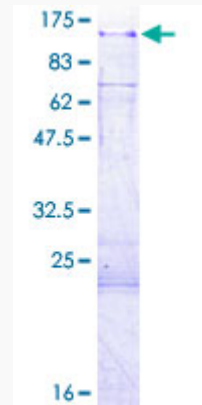
 Email: info@creative-biomart.com  Fax: 1-631-938-8127

 45-1 Ramsey Road, Shirley, NY 11967, USA

MIM 610737

UniProt ID Q6VAB6

**Quality Control
Testing**



12.5% SDS-PAGE Stained with Coomassie Blue

 Tel: 1-631-559-9269 1-516-512-3133

 Email: info@creative-biomart.com  Fax: 1-631-938-8127

 45-1 Ramsey Road, Shirley, NY 11967, USA