

Recombinant Human KTI12 Protein, Myc/DDK-tagged, C13 and N15-labeled

Cat. No. KTI12-3073H **Lot. No.** (See product label)

SPECIFICATION

Product Overview	KTI12 MS Standard C13 and N15-labeled recombinant protein (NP_612426) with a C-terminal MYC/DDK tag, was expressed in HEK293 cells.
Species	Human
Source	HEK293
Description	KTI12 (KTI12 Chromatin Associated Homolog) is a Protein Coding gene. Diseases associated with KTI12 include Ostertagiasis and Trichostrongyloidiasis. An important paralog of this gene is ENSG00000285839.
Molecular Mass	38.6 kDa
AA Sequence	MPLVVF CGLPYSGKSRRAEELRVALAAEGRAVYVVDAAVLGAEDPAVYGDSAREK ALRGALRASVERRLSRHDVVILDSLNYIKGFRYELYCLARAARTPLCLVYCVRPGGPI AGPQVAGANENPGRNVSVSWRPRAEEDGRAQAAGSSVLRELHTADSVVNGSAQA DVPKELEREESGAAESPALVTPDSEKSAKHGSGAFYSPELLEALTLRFEAPDSRNR WDRPLFTLVGLEEPLPLAGIRSALFENRAPPPHQSTQSQPLASGSFLHQLDQVTSQV LAGLMEAQKSAVPGDLLTLPGTTEHLRFTRPLTMAELSRLRRQFISYTKMHPNNENL PQLANMFLQYLSQSLHTRTRPLEQKLISEEDLAANDILDYKDDDDKV
Purity	> 80% as determined by SDS-PAGE and Coomassie blue staining
Stability	Stable for 3 months from receipt of products under proper storage and handling

 Tel: 1-631-559-9269 1-516-512-3133

 Email: info@creative-biomart.com  Fax: 1-631-938-8127

 45-1 Ramsey Road, Shirley, NY 11967, USA

conditions.

Storage Store at -80 centigrade. Avoid repeated freeze-thaw cycles.

Concentration 50 µg/mL as determined by BCA

Storage Buffer 100 mM glycine, 25 mM Tris-HCl, pH 7.3.

GENE INFORMATION

Gene Name KTI12 KTI12 chromatin associated homolog [Homo sapiens (human)]

Official Symbol KTI12

Synonyms KTI12; KTI12 homolog, chromatin associated (*S. cerevisiae*); protein KTI12 homolog; MGC20419; SBBI81; TOT4; RP11-91A18.3;

Gene ID 112970

mRNA Refseq NM_138417

Protein Refseq NP_612426

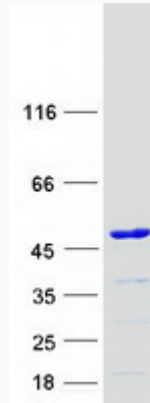
UniProt ID Q96EK9

 Tel: 1-631-559-9269 1-516-512-3133

 Email: info@creative-biomart.com  Fax: 1-631-938-8127

 45-1 Ramsey Road, Shirley, NY 11967, USA

SDS-PAGE



 Tel: 1-631-559-9269 1-516-512-3133

 Email: info@creative-biomart.com  Fax: 1-631-938-8127

 45-1 Ramsey Road, Shirley, NY 11967, USA